



# THE *HotBox*

THE OFFICIAL PUBLICATION OF THE NORTH CENTRAL REGION, NATIONAL MODEL RAILROAD ASSOCIATION

VOL. 66 NO. 2

SUMMER 2025

## *RAILFANNING the PRR Buffalo & Chautauqua Branch*



**RR CLUBS  
IN THE NCR**



**CLUB  
MEETING  
TONIGHT**

**LAST NEWS!  
STATION No. VI**

**ICONIC COALING  
TOWER REMOVAL**



**BUILD A RR TUG**



**WRAP-UP 2025 Div 1  
Spring RR Modeler Meet**

**MODELING ON A SHOESTRING**

**PLUS- RR History, Timetable, NMRA-NCR-Division News & more!**

## The HotBox

SUMMER 2025  
Vol. 66, No. 1

### EDITOR

Barry Hensel  
43642 Lotus Dr  
Canton, MI 48188  
734-649-3056  
barry76Lt@wowway.com



Editorial Advisers  
the NCR Board

Proof Readers  
John Beres

The HotBox is published quarterly by the North Central Region of the National Model Railroad Association. Publication dates are-

SPRING, March 1    SUMMER, June 1  
AUTUMN, Sept 1    WINTER, Dec 1

The HotBox is available online at-

<http://ncrnmra.org>

All material, articles and advertising must be submitted to the Editor. All material should be electronic, preferably MicroSoft Word or Powerpoint. Pictures should be in Jpeg format and color. Material can be emailed or sent via US Mail on cd-rom. Materials will not be returned, unless return postage and envelope are included. Material submission deadline is FIVE weeks before publication date.

### Business ads-

1/2 page \$20 per issue or \$65 per year  
full page \$30 per issue or \$100 per year  
business card \$10 per issue or \$35 per year -or- free business card for exchange of websites and/or sales of HotBox

**Pike ads-** \$15 small, \$30 double and \$60 quad for a 3 year period!

### NCR Division Event ads- FREE

To pay for any ad space... send your payment to the Editor. All checks/money orders need to be made out to "The North Central Region, NMRA"

Send address corrections to the Registrar- Marshall Stull

248-817-9328

[mstull@marshallstull.com](mailto:mstull@marshallstull.com)

Feel free to contact the Editor via email, with any comments, questions or corrections.

**Hello!!** What a difference a few months make! Now that the nicer weather is here, weekly activities have increased as outdoor-lawn work has to fit into that weekly schedule. But, some of that can be fun, relaxing, satisfying and... necessary. Many times it's also good exercise.

Speaking of exercise.... my brain has been getting quite the workout while dealing with 3 monthly newsletters, this new HotBox and the items I have been helping with for STATION No. VI! WOW! But, being busy is also a good thing. It can keep you sharp, engaged with others and some of it is fun too. STATION No. VI will be a great convention. The TEAM is doing everything very well and all arrangements are being met with great results. This truly will be... **a convention like no other!** I hope you will be attending or better yet, volunteering to help, either at the HQ hotel or in helping friends and fellow model railroaders with their home tours or OP sessions. There is plenty to do. One last comment... it has been a pleasure being part of the convention Team! I'm sure all of the great work by all of the Team members and volunteers, will result in a great convention. Congratulations to all, in advance!

Now that summer is here.... are you still doing model railroading? I would suggest NOT taking the summer off.... keep working on some projects, your layout, OP sessions and group meetings. If you really must be outside, try some rail-fanning trips or railroad museums!

Well, time to do some MORE model railroading... and that's always a good thing!! Thanks for reading... Barry



## MODEL RAILROADING IS FUN!

## NCR ON FACEBOOK

**NCR NEWS**

In case you didn't know, the NCR does have a Facebook page! Check us out at <https://www.facebook.com/NCRNMRA> Please LIKE us and feel free to post your current projects, modeling and model railroad events! We'll also post announcements of interest too!

## HOTBOX CORRECTIONS **NCR "OOPS"...**

Always striving to be correct is something we will do with the **HotBox**. But, we are human and mistakes can/will happen. Please forgive us, these are NOT intentional! For the March issue, we know of no concerns or typos.

**FRONT COVER PICTURES-** NMRA logo, Station No.VI logo; At Dunkirk, a work train is dispatched to handle a derailed flat car on the S scale PRR Buffalo & Chautauqua Branch of Gaylord Gill; RDG Tug Boat build; list of model railroad clubs in the NCR area; Scenery problem solved with a shoestring; coaling tower in Battle Creek to be demolished

**REAR COVER PICTURES-** Station No. VI logo; RDG Tug Build part 2;



# NCR - NORTH CENTRAL REGION, NMRA OFFICERS AND DIRECTORS



## President

Rich Mahaney 269-214-4221  
hazmatrichm@aol.com

## Resident Agent

Jonathan Pulling 517-755-7599  
jdpulling@comcast.net

## Vice-President

Dave McMullian 419-508-2206  
train.man4756@gmail.com

## NMRA Central Director

Fred Soward, MMR 502-509-2799  
centdir@nmra.org

## Secretary

John Young 517-449-9063  
cdjhyoung@yahoo.com

## Model & Photo Contests

**Volunteer Needed**

## Treasurer

Steve Harsh 517-316-6764  
harsh@msu.edu

## Achievement Program

Skip Luyk, MMR 616-363-3453  
ArcadiaLogger@gmail.com

## Registrar

Marshall Stull 248-817-9328  
mstull@marshallstull.com

## Division One- Black Swamp Div

Marshall Stull 248-817-9328  
mstull@marshallstull.com

## Directors

T.J. Stratton 419-509-8822  
michigancentralrr@hotmail.com

## Division Two- Tip of the Mitt Div

Jens Hensel 231-866-6017  
jens.hensel50@gmail.com

Scott Kremer, MMR 734-420-2314  
skremer@wideopenwest.com

## Division Three- 3 Rivers Div

Bob Jones 260-459-6339  
broadwaylimited15@yahoo.com

Dave Capron, MMR 231-944-8576  
capron33@gmail.com

## Division Four – Grand Rails Div

Mark Baldwin 616-258-0110  
grandrailsdiv@gmail.com

## Division Five – Capital Div

Andy Keeney 517-316-5660  
hunter48820@yahoo.com

## Division Six – Motor City Div

Bill McMillan 248-349-7456  
wmcmillan7456@gmail.com

## Division Eight- Clinton River Div

Mark Mincek – 586-404-0509  
themotive@att.net

## Division Nine – SW Michigan Div

Garry Johnson 269-365-6777  
elecsprk@gmail.com

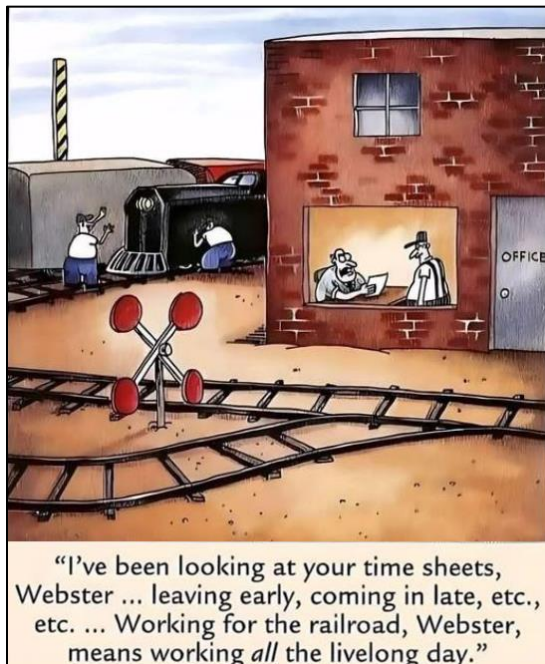
## Division Ten – Ten Wheelers Div

Wayne Wilder 989-823-3409  
bvpsrr@gmail.com

## RAILROADING "WHAT THE ???"

**NCR HUMOR**

Here's a few new items we've found on facebook or other online sources..... enjoy!!



**"Is your Mommy home?"**

# ***PRESIDENT'S OBSERVATION***

***Rich Mahaney***

Hello, from NCR President Rich Mahaney! As I write the note tonight for the NCR Summer Hot Box, I am attending the NMRA Pacific Northwest Region in Pasco, WA where I presented 5 clinics from my collection of clinics. They have had a good convention, but Trump's tariffs and treatment of Canadians has reduced the registration numbers. I have heard conversations out here on the possible future tariff impacts on the North American railroad manufacturers, which could impact manufacture's at on our own Novi National Train Show this summer. Our government has got to stop all of this talk about making Canada our 51st state, tariffs that are raising prices and mocking our friends in Canada that are model railroaders and in the hobby. All of the NMRA Regions that are along the Canadian boarder are seeing the "Trump Effects" on our Canadian model railroad friends and meeting attendance. I will be presenting clinics at the NMRA New England Region Convention in Concord, NH in September 2025, so again a chance to look into another NMRA Region's activities.

I do want to thank the members of our Division 1 group of the NCR, for their work to host a one-day spring 2025 model railroad event back in April, job well done Division 1.

In addition to the Division 1 event in the Toledo, OH area, your NCR Board got together for our Region spring meeting on the day before for a 3-hour meeting and discussion.

As we prepare for the upcoming NMRA National Convention in Novi, MI on July 14 to 19, 2025 we need to look forward to this event and the opportunity to having it close to us for our NCR members from MI, IN and OH. We look forward to sharing our convention activities with non-NMRA members also. We want them to join our wonderful and fun hobby to see what they are missing! As of this date, as I am writing to letter. There are over 750 people registered for the convention, WOW! Future NMRA conventions will be in Chattanooga, TN and Tacoma, WA, which is bit more of a travel distance to attend an NMRA Convention during the next two years, as compared to attending in MI.

I would like to thank Scott Kremer and his incredible team of people for their vision, ideas, planning, hard work, lots of hours and time to make this convention come together. Great job team!! It will go down as one of the great NMRA National Conventions!! Who knows when or if it will ever come back to MI or the NCR.



I have had to chance to talk with and listen to Gordy Robinson, NMRA President today here in Pasco, WA, as he is here attending in person. He presented a clinic today on "what's happening at NMRA Headquarters" and things that the Board of Directors are working on, along with member teams from withing the NMRA. Interesting stuff ahead for NMRA members!

Also, as I write this "NCR President's Letter", we have over 750 people registered for the Novi Convention in July, which is great. It will be a great week of model railroading with conversations with friends, learning opportunities from some of the best model railroaders in the world, layout viewing, lots of great clinics to attend and other activities! Plus, the Train Show on Saturday and Sunday. It all starts on Monday at lunchtime, July 14th. If you have not registered yet, get registered immediately, because we do have a planned number where we will stop taking registrations due to the capacity of the hotel and Fire Marshall safety rules for capacity. Yes, I mean a "cut off" number. So, register now and don't get left out! Remember there are no buses to ride to see layouts, so bring your own vehicle or rent a vehicle. Come have a great time, be kind, share with others on model railroading topics that you are smart about and learn from many others from across North America and other places in the world!

***Rich Mahaney***  
***NMRA NCR President***

**How about writing an article on your latest modeling project! Earn AP points! At the HotBox, WE NEED and WANT your articles!!**

# ***NCR MODEL RR CLUBS*** *by John Young, Div 5* ***NCR MODELING***

**MODEL RAILROAD CLUBS OF THE NORTH CENTRAL REGION** A few days-ago I was cleaning out a drawer and found two things of interest. One was the first issue of the Op SIG's Dispatcher's Office magazine I ever purchased. This issue had articles on detailed discussion of car cards, comparison of computer-based car distribution programs, and a few other articles near and dear to my own operating philosophies. The second was a list of the model railroad clubs present in the NCR that I created prior to the last time the NMRA held its national convention in Detroit in 2007. It includes round robin groups, permanent club layouts and modular groups from our entire region. My question is, who is left from the list? Here are those clubs from 16 years ago:

## ***METRO DETROIT -***

Gandy Dancers  
Mini Bunch  
**Rail Gang**  
**South Oakland RR Club**  
Trenton Train Club  
**Southeast Michigan S Scalers**

**Allen Park Model RR Club**  
**Gratiot Valley RR Club**  
**Rail on Wheels**  
Roundhouse RR Club  
Southeastern Michigan Modular RR  
**SE Michigan Free-mo**  
North American Model Engineers Society

**Ann Arbor RR Club**  
**Midnight Pocatello Yardmasters**  
**Redford RR Club**  
Society of N Scalers  
**Stoney Creek RR Club**  
**Lakeshore Garden Railway Club**

## ***WESTERN MICHIGAN -***

Cass County Rail  
Hillsdale Co RR Club  
**Kalamazoo Model RR Club**  
West Michigan RR Club

Alaska Train Club  
Coldwater RR Club  
Holland Model RR Club  
Muskegon RR Society

**Battle Creek Model RR Club**  
**Grand Rapids Model RR Club**  
Iron Rails  
Riverbend Model RR Club

## ***LANSING/THUMB AREA -***

**Capital Area RR Society**  
**Detroit Model Railroad Club**  
Huron Model Railroaders  
Lapeer Model RR Club  
Saginaw Area Modular Model RR  
Thames Valley Central RR Club

B.E.A.N Club  
Central Michigan MRRC  
**Durand Union Station RR Engineers**  
**Lansing Model Railroad Club**  
Michigan Belt Club for the Deaf  
Saginaw River Valley RR  
Tri-County Model RR Club

Bluewater International N Trak  
Clare Model Railroad Club  
Electronic Model RR Club  
**LaNtrak**  
Mid-Michigan Model RR  
**Saginaw Valley Club**

## ***TOLEDO AREA -***

Defiance Model RR Club  
Raisin Valley RR Club  
**Blissfield Model Railroad Club**  
**Northwest Ohio Railroad Preservation**

BP-RR Club  
Galion Model RR Club  
**Southeast Michigan S Scalers**  
**Montpelier Trackside Modelers**  
**Great Lakes HOn30 Modular Group**

Boo Coo Trains  
**Northwest Nodular Club**  
Toledo Model RR Engineers

## ***INDIANA – DIVISION 3 -***

**Maumee Valley Model RR Club**

Garrett Model RR Club  
TRAIN - Three Rivers

La Grange Model RR Club

## ***HISTORICAL SOCIETIES -***

**Grand Truck Western Hist Society**  
**Pere Marquette Hist Society**

**Ann Arbor RR Society**  
Great Northern Ry Hist Society  
**Project 1225 – Steam Rail Institute**

Bluewater Chapter of NRHS  
Norfolk & Western Hist Society  
Tri-State Locomotive Club

## ***LIVE STEAM -***

**North Western Ohio Live Steamers**

**Great Lakes Live Steamers**  
Junction Valley

Huron Valley Live Steamers  
**Turkeyville**

## ***HI-RAIL CLUB -*** Lionel Collectors

How many of these groups are still around and are they thriving? With a 16 year old list, contact information for most of these groups is very dated. If you have knowledge of one of these groups and contact information, would you please share it with me at: John Young [cdjhyoung@yahoo.com](mailto:cdjhyoung@yahoo.com)

*Editor's Note: those listed in **BOLD** type are one's that we know are still an active organization.*



## **RAILFANNING the PRR Buffalo & Chautauqua** *NCR TRACKSIDE*

Gaylord Gill's Buffalo & Chautauqua layout represents portions of the PRR's Northern Division in summer, 1953. All the equipment and modeling are in S scale (1:64). His layout will be one of many available to tour during the STATION No. VI convention in July 2025. *Left, down, then right* - Train BF-21, led by a PRR I1 2-10-0 Decapod, arrives at Olean yard • A Pennsy RSD-5 works the nearby siding of the Koenig Fuel depot • On shared trackage through western New York, a B&O train pounds the Buffalo Main • Preparing to depart Olean, the loco pulls forward to top off the sand dome • Trish's One-Stop is a neighborhood option for groceries and sundries • A railfan temporarily blocks the one-lane bridge to catch a passing steam locomotive.





## **RAILFANNING the PRR Buffalo & Chautauqua** *NCR TRACKSIDE*

*left down, then right...* In the Buffalo neighborhood next to Babcock Street yard, Randy's is a favorite haunt

- At Angola, NY the modest freight station is a one-man operation
- Tower FW in Buffalo marks the termination of the Chautauqua Branch
- Heading northeast into Buffalo, train BNY-16 travels along the Chautauqua Branch
- An SW1 shuttles cars from Babcock yard to the Seneca Street freight house
- Twilight closes in on the 100-ton coaling tower at Olean





# **NMRA-NCR ACHIEVEMENT PROGRAM**

## **NCR AWARDS**

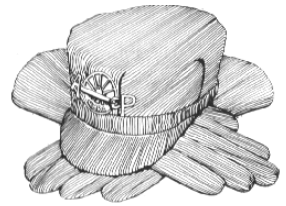
I am pleased to report that we have a good start to 2025. Thanks and Congratulations go to all NCR members that are participating in the Achievement Program.

*Skip Luyk, MMR, NCR AP Coordinator*

**MODEL RAILROAD ENGINEER - ELECTRICAL** - Gary Hunter, Div. 6

**MODEL RAILROAD MASTER BUILDER - SCENERY** - Steve Weber, Div. 8  
and Stephen Kellogg, Div. 1

**MODEL RAILROAD CHIEF DISPATCHER** - John Campbell, Div.2  
and E. Phillip Doolittle, Div. 8



***Pictures next issue!!***

**ACHIEVEMENT PROGRAM QUESTIONS:** If you have questions about the AP or requirements, start with your Regional AP manager, Skip Luyk, MMR. Also – Ron Gilbert covers Div 1 [rarjgilbert@yahoo.com](mailto:rarjgilbert@yahoo.com); Jim Macino, MMR covers Div 3 - 260-693-6102 [jim@icmgt.com](mailto:jim@icmgt.com); Ken Chick, MMR covers Div 6 and 10 – 734-420-0276 [kdchick@wowway.com](mailto:kdchick@wowway.com); Pete Magoun, MMR covers Div 2 – 231-941-1669 [orion@chartermi.net](mailto:orion@chartermi.net); Bruce DeYoung covers Div. 8 - [bbdeyoung@comcast.com](mailto:bbdeyoung@comcast.com) and Dorman Wilson for Div 9 - [N8YNW@charter.net](mailto:N8YNW@charter.net) If you still have questions, contact the NMRA AP Chairman RAY PERSING! Ray can be reached at [achiev@nmra.org](mailto:achiev@nmra.org)

## **NCR DIVISION BOUNDRIES REVISED**

## **NCR INFO**

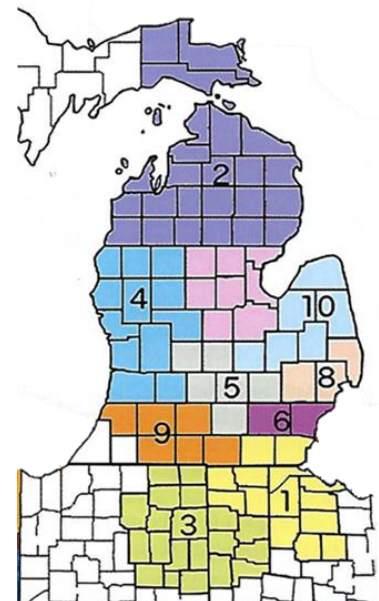
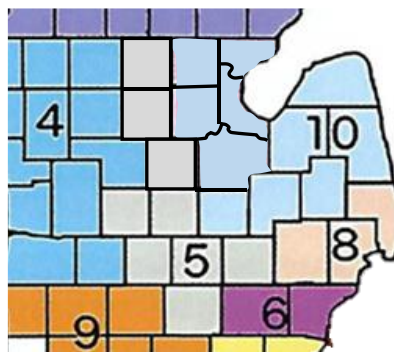
At the recent NCR Board meeting in April, the counties in central Michigan that were not assigned to a Division, have now been assigned! The map to the right is the old NCR and Division boundaries. Those counties in the middle, in a pink color, are the ones that have now been assigned to a current Division. The changes are.....

**Division Five – Capital Division** has grown and now includes Gratiot, Isabella and Gratiot counties.

**Division Ten – Ten Wheeler Division** has grown and now includes Saginaw, Bay, Midland, Arenac, and Gladwin Counties.

Here is what the new NCR map will look like -

We hope that any NMRA – NCR members in these counties will now seek-out your new Division and become involved to make those Divisions better. Let those members have a great time and welcome them into your Division family!





# **SCENERY ON A SHOESTRING** by Mike Sutinen (Div 6) **NCR MODELING**

## **SCENERY ON A SHOESTRING (literally)**

I finally started to add scenery to my layout, and started with a narrow section that has a lift-out to access electronics in the fascia. For the lift-out, I added a few hills to a piece of peg-board, covered it with Sculpt-a-mold and ground goop, then added some ground foam, and it looked acceptable. What I hadn't considered, was the lip where the peg-board sits on top of the other scenery. Looking at this section from the front (photo 1) it didn't look too bad, but from the side, (photo 2) which is visible when you enter the layout room, a gap can be seen along the entire edge of the track.

*Photo 1 (from the front)*



*Photo 2 (from the side)*



I needed something that was flexible and wouldn't stick to the lower part of the scenery. I tried a number of different approaches, but each one ended up with a noticeable gap. The best option seemed to be adding individual clumps of scenery

material all along the edge, but I was worried that they might attach to both sides preventing the

removal of the lift-out, or not stay in place. I started looking at unusual solutions, like maybe a piece of thick thread with foam clumps attached. Then my wife suggested a shoelace. Starting with an old brown lace and some Elmers glue, I added clumps of Woodland Scenics "brush" along one side of the lace, varying the height and density along the length. I stretched two shoelaces across a non-stick work surface and added the bushes (Photo 3).

*Photo 3*



When the glue dried, I cut off the ends and placed the laces in the gap (photo 4)

*Photo 4*



I still have a lot of work to do on this section, (like adding trees and brush along the back to cover the plowed field on the backdrop)

and a better solution may be to taper the peg-board to meet the stationary scenery, but for now, scenery on a shoe-string works for me.

**Division One - Black Swamp Division** report is on page 25!!

**Division Three - 3 Rivers Division** (Fort Wayne, Indiana and western Ohio area)

In May some of our 3 Rivers Division members are starting to build a DPM model complete with lighting, detailing and signage each will be added at future meetings and be completed around February 2026. We are in full swing planning and organizing the October 18 Swap here in Fort Wayne. With the warmer weather vacation plans to railroading attractions and being with family and friends is just beginning. Hope everyone has a safe and enjoyable summer. Some of our members are hosting and participating in numerous layout Ops Sessions throughout our division. (Submitted by- Bob Jones, Superintendent)

**Division Four – Grand Rails Division** (Grand Rapids and west Michigan area)

We continue to meet. Please watch our website and Facebook page for meeting updates. Couple of updates from the Grand Rails Division, Starting with the May 10th meeting we will have a new meeting place in Jenison MI. Also we have found a venue for the 2026 NCR Convention in Zeeland MI. I'm going ask again what are you looking for with the division, what like of programs, etc...? Let's share our ideas. For more information contact Mark Baldwin at [grandrailsdiv@gmail.com](mailto:grandrailsdiv@gmail.com) or visit the NEW division website <http://grandrailsdiv4.org> (submitted by Mark Baldwin, Div 4 Superintendent)

**Division Five – Capital Division** (Lansing and mid-lower Michigan area)

To welcome Spring, the March get together featured a clinic on Model Railroad Yard Operations by Kevin Griffin and a display of open loads on flat cars, well cars, gondolas, box cars, hopper cars, baggage cars and carts, auto racks and etc. For April, we started at Division Superintendent Andy Keeney's large, operation based Nashville Lines layout. After taking care of business, the members toured the layout to see improvements and learn some of the operational features. We then progressed over to the HO scale Great Northern/Old Goat Division by Bob Truax. This great layout features both mountain and industrial scenes. For May, the final gathering of the season, we toured four layouts in the eastern part of the Division. We started in Howell and the bedroom sized N scale Port Authority Terminal RR, loosely based on the rail, port and industries along the Cuyahoga River on the east side of Cleveland during the '60s. Next was the O scale city trolley system on Howard Ziegel's layout set in the 1950-70s period and featuring Detroit street cars, powered by overhead wire and running on several routs among numerous commercial and residential buildings. Then down to Pinckney to visit the HO scale Iowa Central, which runs on former Rock Island tracks in the mid-to-late 1980s, built by Kevin Griffin and set in contemporary rural Iowa. Our last tour was a contemporary N scale, CSX coal hauling railroad set somewhere in Appalachia. The layout features WORKING coal loading and unloading structures! There is a working flood loader which loads the cars as they are pulled through the silo and two different styles of rotary dumpers. That's it for the summer, except of course, for the Station No. VI Convention in July and any of the other conventions that members may also be attending. You can subscribe to the monthly Division 5 Newsletter. Send a request to Mark Cowles, at [nkpcowles@yahoo.com](mailto:nkpcowles@yahoo.com). For more info, see our website: <https://nmrancrdiv5.com/> (Submitted by- Mark Cowles, Div. 5 Clerk)

**Division Six – Motor City Division** (Wayne & Washtenaw Counties) The Motor City Division, Division 6 will be helping with the STATION No. VI convention in July. Many of our members are hosting tours, OP sessions, a few clinics and lots of volunteer help! After that, we hope to redo our annual FALL SHOW & WORKSHOP in November. This is our annul "how to do" event where we teach model railroading to anyone that attends. The new part of this long-standing event is that we are partnering with the Rails On Wheels club and their annual November swap meet! A new location for both is in the works!! SEE the ad on page 32 of this HotBox. We also just signed all the papers and made deposits for our 5th annual MODEL RAILROAD SALE event – Saturday, January 24, 2026. We'll be at the 2|42 Community Center in Brighton, as it is a great facility. We've even figured out how to get a few more tables in, we'll have 200 tables in 2026! Vendor info has already been sent out and flyers will be out very soon. Our monthly meetings continue, local layout tours when possible and lots of fun and education. Everyone is welcome to attend! Our newsletter "On The Rails" and other info can be found on our website - [www.div6-ncr-nmra.com](http://www.div6-ncr-nmra.com) (submitted by Barry Hensel, Newsletter Editor)



**Division Two - Tip Of The Mitt** (*Manistee to Iosco counties, north to the Mackinac Bridge plus Luce, Chippewa, and Mackinac counties in the U.P.*) Our meetings take place at 10 am at the Foster Family Community Health Center, located at 550 Munson Avenue, in Traverse City. Division 2 leadership has changed. Taking over as Superintendent is Jens Hensel, Paul Anderson is now Assistant Superintendent, and T. J. Stratton is our new Yardmaster. A very experienced, knowledgeable and talented group. Planning continues for 2025. We also go hybrid, connecting by Zoom. Our most recent Clinic, presented by Ernie Barry, was all about track Cleaning. We also enjoy "Show and Tell" as it gives us a chance to see members progress on all aspects of modelling. To request meeting invitations and our quarterly newsletter, email our Superintendent, [jens.hensel50@gmail.com](mailto:jens.hensel50@gmail.com) (Submitted by Mike Cipko, former Division 2 Superintendent)

**Division Eight - Clinton River Division** (*Oakland, Macomb, St. Clair Counties*)

The time is near! By the time we are all reading the next issue of the Hotbox, the 2025 National Convention will be in the books. The National Convention is the event where the NMRA can put its best foot forward and showcase the very best of the organization and how fun it is to be an NMRA member. Eighteen years ago, I attended my first National convention here in Detroit. I had a wonderful time, but one small experience stands out. During a prototype tour, a veteran NMRA member stopped to talk to me. He noticed that it was my first convention and asked me if I was a new NMRA member. I told him that I was. He took the time to let me know how the area is divided into divisions and invited me to a Division 8 meeting. Had he not taken the time to talk with me and welcome me to a meeting, I probably would have just attended the convention and left with good memories, never knowing what else the NMRA could offer. I've since met other "newbies" at other conventions and, in almost every case, the person I'm talking with had no concept of divisions or that they could come to meetings and enjoy this great hobby with others that live in their area. So, if you see a new person at our convention in July, make sure you take the time to first welcome them, tell them a little about divisional meetings and let them know that there are likely similar activities where they live. Let's take advantage of what we are offering and use this as a way to grow the NMRA. As always, you're invited to join us at 7PM on the third Thursday of the month, please drop into the Troy Christian Chapel at 400 East Long Lake Road in Troy Michigan. Our NEW web site is, <http://div8.ncrnmra.org/> Our Facebook group is at [www.facebook.com/groups/288929175921717/](https://www.facebook.com/groups/288929175921717/) (Submitted by Mark Mincek, Superintendent)

**Division Nine – Southwest Michigan Division** (*Branch, Calhoun, Hillsdale, Kalamazoo, St. Joseph, and VanBuren Counties*) Summer months are a little slow as there are no scheduled events in July & August, then in September we hold our annual meeting at the Kalamazoo Bridge Club to kick off the Fall Schedule. The details of the September meeting will include our normal business meeting, an update on our bylaws, election of officers, a 50/50 raffle, door prizes, show & tell, an open discussion and a clinic on a "to be determined topic" related to model railroading. On a sad note, Dave Vinci passed away in April. Dave was a super guy who was very knowledgeable and always willing to help his fellow modelers resolve problems. The latest edition of the Yardmaster Newsletter has several pages devoted to some of Dave's work, including a reprint of an article that appeared in the Hotbox in the Spring of 2017. You can click on this link to view the May Yardmaster Newsletter. <https://div9.ncrnmra.org/yardmasterlibrary/> Our newsletter The Yardmaster, and other information are posted on our website. If you would like a copy of our monthly newsletter via email, send your email address to [alanwbau@gmail.com](mailto:alanwbau@gmail.com). (Submitted by Alan Bau, Div 9 Scribe & Newsletter Editor)

**Division Ten – Ten Wheeler Division** (*Shiawassee, Genesee, Lapeer, Tuscola, Sanilac, Saginaw, Bay, Midland, Arenac, and Gladwin and Huron Counties*) Division 10 has grown, and now includes Saginaw, Bay, Midland, Arenac, and Gladwin Counties. We welcome the NMRA members from these counties at our monthly meetings, the fourth Thursday of the month, 7:00 pm, at the Experimental Aircraft Association Chapter 77 meeting room at Dalton Airport on Pierson Rd. in Flushing. Our meetings are informal and include a short discussion of NMRA and NCR events, followed by "show and tell", as we show off and describe our latest modeling projects. Many of our members are involved in the planning of Railfans Weekend at Huckleberry Railroad at Crossroads Village in Flint, August 2-3. For more information, contact Superintendent Wayne Wilder at [ncrdiv10@gmail.com](mailto:ncrdiv10@gmail.com) or at 989-823-3409. (Submitted by Wayne Wilder, Superintendent)

## ***Century-old coaling tower in Michigan City to be demolished***

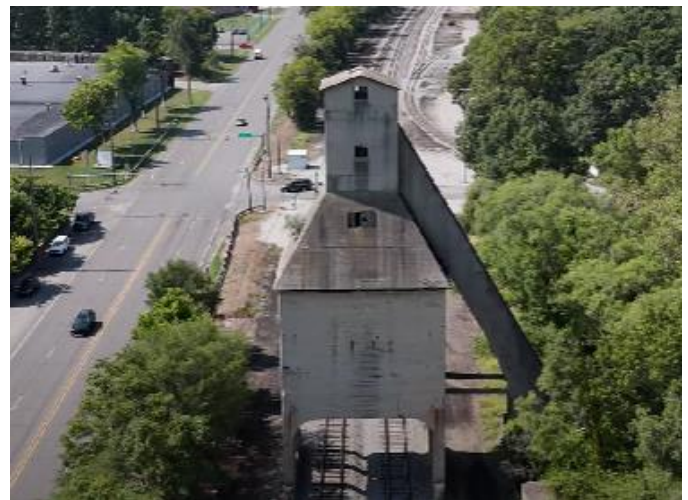
It has been more than five decades since coal-powered trains traveled across the country. In Michigan City, though, there is a giant reminder of that past. But it too will soon be gone. Off U.S. 12, a coaling tower has been standing tall for more than a century. It will soon be gone, but its legacy will live on in Michigan City history.



The coaling tower once fed the steam engines that powered America's railroads. But it's now non-functional and has been for more than 50 years. The more than 100-foot-tall structure left standing over the rails has caused concern in recent years because Amtrak passenger trains still pass under it. "It needs to go because it's a potential hazard, and it needs maintenance if it's going to stay there, and it would not be a good use of money to maintain something we're not using," said Marc Magliari, Amtrak Senior Public Relations Manager. The iconic structure is beloved by many in Michigan City because it's an important piece of the city's history. "Well, it was built in 1923, and it was state-of-the-art at the time. All of the machinery they put in it was brand new, experimental, and top of the line. So it was amazing, actually, at the time," said Bill Halliar, Michigan City Historical Society Co-President. The tower was among the first to allow trains to pull underneath to refuel instead of switching to another set of tracks to get to a coaling station, a game changer of its time.



One person WSBT 22 spoke with said he's sad to see it being demolished, but is not surprised. "It's not surprising that they're tearing it down, but it truly does suck. But at the same time, their main concern is just safety as far as falling debris or, God forbid, that tower ever comes down," said Evan Burian, Train Enthusiast.



According to Halliar, there were efforts to save the structure, but they were all unsuccessful. There are plans to memorialize the coaling tower, though, with a plaque with a picture of the tower where it once stood. The drive down U.S. 12 will never be the same. "Well, it's been with you know, for four generations, five generations of people driving by that. It's always been a part of who we are. It's just sad to see an old structure being torn down, history being torn down and forgotten," said Halliar. Demolition is set for September. City officials said work is expected to last around two weeks, and crews will work around the clock. In that time period, buses will be used to transport passengers. *(ED note- see next page for credits for this article)*



# **MICHIGAN CITY COALING TOWER**

**NCR NEWS**

Story by Cicily Porter, WSBT 22 reporter

[WWW.MSN.COM/EN-US/NEWS/US/CENTURY-OLD-COALING-TOWER-IN-MICHIGAN-CITY-TO-BE-DEMOLISHED/AR-AA1DUR5M?OCID=MSEDGDHP&PC=HCTS&CVID=0D37F84832F147DA8A01DC18AD4018F6&EI=25](http://WWW.MSN.COM/EN-US/NEWS/US/CENTURY-OLD-COALING-TOWER-IN-MICHIGAN-CITY-TO-BE-DEMOLISHED/AR-AA1DUR5M?OCID=MSEDGDHP&PC=HCTS&CVID=0D37F84832F147DA8A01DC18AD4018F6&EI=25)

Drone video by Josh McIntyre: [HTTPS://YOUTU.BE/AVQWK7FPK3I](https://youtu.be/AVQWK7FPK3I)

## **NCR DIVISION OF CHOICE**

**NCR PROCEDURE**

Do you live in one division, but attend meetings and participate in another? With the “**DIVISION OF CHOICE**” program you can become an official member and even hold office in the division of your liking! All you need to do is fill out the **DIVISION OF CHOICE** form and submit it to the NCR Registrar. Once filed, you can vote and hold office in the division of your choice. Please be aware, the North Central Region (NCR) will notify both divisions of your choice and records will be maintained within the NCR. The NMRA national office WILL NOT change your default division (which is part of your NMRA number). The NCR and your division of choice will honor your selection and provide all the rights of a standard member of that division.

<https://www.ncrnmra.org/wp-content/uploads/2023/02/NCRDivisionOfChoice.pdf>

## **IN MEMORIAM**

**NCR STORY**

We are sad to report that members in the NCR have been lost. Our deepest sympathies go to the family and friends of our fallen members.....

**DAVID VINCI.....** 73, of Mattawan, passed away on Sunday, April 6, 2025. He was born December 9, 1951, in West Chester, PA. He graduated from Upper Darby High School in 1969. He attended Pennsylvania State University at both Altoona and State College campuses as a US Army ROTC student. He graduated in December 1973, with a Bachelor of Science degree in Biological Health. He was honorably discharged from the Army in 1973. David had many hobbies and interests throughout his life. He was a member of the Boy Scouts of America from Cubs to Explorers. He loved hiking, camping, and cooking over an open fire. He became involved with reenacting the colonial and the Civil War periods of American history. Dave was captivated by the railroads that served the country, and he became an avid railfan. That interest also included model railroading, which he began at 8 years old. For the past 40 years, a museum-quality, operational HO-scale model railroad was his art as well as his therapy. The Pennsylvania Railroad was his favorite, and he modeled an imaginary segment of it, dated around 1928. He was a long-time member of the National Model Railroad Association and he was one of the founding members of the Division 9 Chapter of the organization for SW Michigan. He was also a member of the Grand Rapids & Indiana Chapter of the Pennsylvania Railroad Technical & Historical Society, editing and publishing their quarterly newsletter over several years. David loved music of all genres but was inspired by the banjo. The folk music and bluegrass movements from the 1960s onward inspired Dave to teach himself chords and later, learn the clawhammer style of playing. Dave was a talented woodworker, woodcarver, and blacksmith. David bravely fought multiple sclerosis for 3 decades. Dave valued support he from the Disability Network of SW Michigan and he was on the Finance Committee until 2025. He also served on the Board of Directors, working through all the positions, including President of the Board. He also served as a co-leader for a monthly peer support group sponsored by the National Multiple Sclerosis Society until 2020. David's life was a commitment to living in integrity, with honor, honesty and personal responsibility. He believed in encouraging creativity, and in giving back to his community, leaving the world a bit better for his having been here. His kindness and caring spirit will live on in the hearts of his beloved family and friends. Make memorial contributions to the National MS Society, National Model Railroad Association, or Disability Network of Southwest Michigan in Kalamazoo, MI.



# 2025 SPRING RAILROAD MODELER MEET

**NCR EVENT**

For a second year in a row, Division One – the Black Swamp Division, has hosted a Spring Modelers Meet! For 2025, it was again a success with many model railroaders attending from the NCR and surrounding area. Clinics, model displays, vendors and layouts were all the focus of the one day event.



## 2025 Spring Railroad Modelers Meet

Hosted by the Black Swamp Division (Div 1) of the North Central Region (NCR), NMRA

**April 5, 2025 – Sylvania OH**





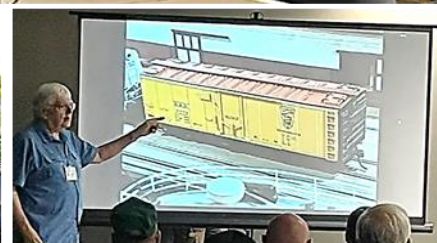
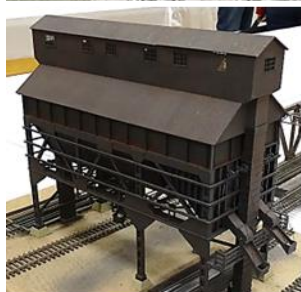
# 2025 SPRING RAILROAD MODELER MEET

NCR EVENT

## 2025 Spring Railroad Modelers Meet

Hosted by the Black Swamp Division (Div 1) of the North Central Region (NCR), NMRA

April 5, 2025 – Sylvania OH





Here is where your news items, rumors, and gossip of just about anything in the Model Railroading hobby can be reported. Whatever it is, send it to us and we'll let everyone else know!

**BTR #1** - We did get a few links to share, so we're passing these along....

Two from friend Bruce Ernatt, a video on how a guy designed his huge Wichita Rail Yard (BNSF side) - K&W Model RR Design [www.youtube.com/watch?v=NSbqSyolPbo](http://www.youtube.com/watch?v=NSbqSyolPbo) and Northwest Indiana Steel Mill Trains - Burns Harbor, Gary Works, Indiana Harbor - <https://www.youtube.com/watch?v=hqlkrnhIDfk>

For our Veterans!.... Military Train in AZ part 3 [www.youtube.com/watch?v=Q4Ku9b61eK4](http://www.youtube.com/watch?v=Q4Ku9b61eK4)

From a PA friend... an interesting video on Rail Post Office service. There are a lot of passenger trains, but also an RPO training film at the beginning. [https://youtu.be/B\\_kAFLxXT9s?si=LWAaKqFb8oxJ7R4A](https://youtu.be/B_kAFLxXT9s?si=LWAaKqFb8oxJ7R4A)  
I didn't know there were also Highway Post Office vehicles, too.

**BTR #2** - Many model railroading companies have put out statements on the tariff situation and how they will be handling these expenses. Many of these statements are posted on Facebook and on their websites. And... in association with the current trade situations, a new organization has been formed - ***HobbyCoalition.org*** This is a new industry-wide initiative to protect the future of toys and hobbies in America. The Hobby Industry Coalition is a non-partisan alliance of manufacturers, retailers, clubs, and enthusiasts committed to fair and effective trade policy. Visit the site to read the Tariff Position Paper, track daily trade developments, and learn how you can get involved: [www.hobbycoalition.org](http://www.hobbycoalition.org) Together, we can keep the hobby thriving and affordable, for ourselves and future generations.

**BTR #3 - MICHIGAN RAILROAD CLUB PROGRAM** The Michigan Railroad Club will be meeting on the first Wednesday of each month at The Radcliff Center, 1751 Radcliff St. in Garden City, Mich. This is south of Ford Road and along Wildwood St. (east side of Wildwood). We will be meeting in a NEW Room #690. This can be accessed from the South parking lot through door RC-5. Enter from the parking lot on the West side of the building. ALL are welcome! Meetings will start at 7pm and end at 8:50pm. Here is the schedule –

June 04, 2025 - Gary Kadau with "Railroads of Grosse Ile"

July 02, 2025 - TBA

August 06, 2025 - Mark Cowles

September 03, 2025 - TBA

For any other questions please contact: Kenneth Borg 3512 Merrick, Dearborn, MI 48124

**BTR #4 - NCR MEMBERS IN PRINT** The NCR Members listed below have had articles, letters or photos published in the National model railroad press in the past few months: With the NMRA convention coming to NOVI very soon, NCR Authors have been very busy. Here's a list of articles in the mainline model railroad press written by NCR members - Doug Tagsold (Div. 1) had an article/photos in the NMRA Magazine of Jerry Sahagians's layout in February, an article on Mike Finkler's layout in March and photo credit for Joe Watt's article about the Blissfield Club layout in April. John Peters (Div. 8) had a letter published in the April NMRA Magazine Mail Car. Jay Qualman (Div. 6) had a Trackside photo in February MR. Ken Chick, MMR, (Div. 6) had an article about his layout in the May MR. James Talbott (Div. 6) has an article about changing eras on his layout in April MR. Gaylord Gill (Div. 8) had a layout photo in MR Trackside Photos in April. Scott Kremer, MMR, (Div. 6) has an article about operations on his layout in the March MR. Brooks Stover, MMR, has an article about car routing in February MC. Dan Lewis, MMR, (Div. 8) has an article about planning photographs in the February RMC. I regularly review the following magazines for items from NCR members: Dispatcher's Office (DO), the OPSIG magazine, The NMRA Magazine, Model Railroader (MR), Narrow Gauge and Short Line Gazette (NGSLG), Railroader Model Craftsman (RMC). If you have an article, photo, or letter published elsewhere, such as Railroad Modeler, N, O or S gauge magazines, etc. feel free to notify me for inclusion in this list. Phil Doolittle, [doolittlep@comcast.net](mailto:doolittlep@comcast.net)

**DISCLAIMER!!**- While we will try to verify most stories, the HotBox, HotBox Editor, NCR Board of Directors, its agents and representatives will not/cannot be held responsible for mis-information presented in this column.



# STATION No. VI 2025 NMRA CONVENTION!

NCR NEWS

Station No.VI 2025 Summer Status Report -

We're almost here.... the convention is only 6 weeks away! Are you ready? WE ARE!!! All of the convention plans have been shaping up very nicely. The Planning Team has one more meeting to dot those i's and cross those t's. Registrations at the time this is being written is near 750 and by time this is published and you're reading it, we should be well over 800! We are "on track" to have 900-950 attending STATION No. VI. Some of us are still hoping we could top 1000! For this last report, we'll look at some of the convention high-lights and some of the "nuts and bolts" of what will be happening.

One last item..... **VOLUNTEERS!!** We are still in need of volunteers to help work the convention. Jobs like registration table, Yard Sale room, Model Display & People's Choice Contest room, AV equipment help and probably a few other misc. jobs. Please contact Bill McMillan [wmcmillan7456@gmail.com](mailto:wmcmillan7456@gmail.com) or Mark Mincek [themotive@att.net](mailto:themotive@att.net) to volunteer and help make STATION No. VI the best convention possible! OK... let's start the STATION No. VI pre-event review....

**LAYOUTS** – Here is the layout tour schedule with layouts in the same geographic area to minimize travel -

**LAYOUT TOUR – CENTRAL - Monday, July 14** - Bill Neale, MMR PRR Panhandle; Byrne Blumenstein's AT&SF, Eagle West Division; Irvin Chmielewski's Iron River Valley Railroad; Mike Tranquilla's Burlington Pacific; Norm Charbonneau's Northbrook Railroad; Norm Logan's Michigan Southern Railway; Scott Kremer, MMR Great Northern Railway Cascade Division

**LAYOUT TOUR – NORTHEAST - Tuesday, July 15** - Dan Lewis, MMR Milwaukee Road, North Montana Line; Jim & Lois Dennis' Michigan Central; Gratiot Valley Club's Gratiot Valley Railroad; Gregory Rich, MMR New Baltimore & Fair Haven Railway; John DePauw's Elgin Joliet & Eastern Railway; Rad Jones' MIO (Move It On) Railroad System; Robert Stelmach's Red Pine & Oxville; Ron Griffin's Adrian and Blissfield Railroad, Macomb Div; South Oakland County Model Railroad Club Grand Trunk Western, Holly Subdivision; Steve Smith's Sierra Valley and Harbour Junction; Tim Fisher's Cimarron and Santa Fe

**LAYOUT TOUR – NORTHWEST - Wednesday, July 16** - Bill Bartlam's Surrey Valley Railroad; Detroit Model Railroad Club's Detroit Union Railroad; Dick Tomlinson's Michigan Shore Line; Ed and Vicki Adler's Eagle River Lines; Gaylord Gill's Buffalo & Chautauqua; George Van Duyne's Rochester & Richmond; Jay & Brook Qualman, MMR Michigan Lines; Michael Burgett's C&O Clifton Forge Division; Richard Harden's Chicago & Northwestern, Peninsula Division; Rick Ware's Chesapeake & Ohio, Greenbrier Division and Loon Lake Railway; Saul Kalbfeld's Thomaston and Rock City Falls; Thomas Dart's Durango & Silverton and Jockton, Daniels & St. Marten Railroad

**LAYOUT TOUR – SOUTH - Thursday, July 17** - Barry Hensel's Reading Lines, Central Division; Blissfield Model Railroad Club's BMRC; Doug Tagsold's Colorado & Southern Clear Creek District; Jeff Fryman's Wabash, 2nd Division; Jerry Sahagian's Great Northern, Kalispell Division; Jim Talbott's Wheeling & Lake Erie; Jim Tilley's PRR & B&O, PYA Division; John Emley's Soo Lines, Latta Subdivision; Ken Chick, MMR Danforth Hadley & Northern; Michael Finkler's PRR, Toledo Division; Rick Lecki's UP Fallen Flags; Rick Neibert's Chessie System, Huntington Division



## LAYOUTS – continued -

**LAYOUT TOUR – WEST - Friday, July 18** - Andy Keeney's Nashville Road; Ann Arbor Model Railroad Club's Huron Valley Railroad; Bob Truax's Great Northern, Old Goat Division; Chuck Hughes' D+H Lines; Dawn Audio and Tom Weaver's CP Rail; Howard Ziegel's City Street Car Layout; Ken Johnson's Grand Trunk Western, Flint Subdivision; Kevin Griffin's Iowa Central at Vinton, Iowa; Kevin Guthrie's CSX Coal Branch; Lansing Model Railroad Club's Hogsback & Southern; Mark Cowles' Port Authority Terminal; David and Mary Percell's American Heritage Railway

**LAYOUT TOUR – NEAR SOUTH - Saturday, July 19** - Ken Chick, MMR Danforth Hadley & Northern Michael Kisser's Sagana Northern Railway, Kentucky Division; Redford Model Railroad Club's Sand Hill & Western Railroad; Ron King, MMR Erie Railroad

## CLINICS – here is the list of clinics for the week featuring 119 clinics with most given twice –

<i>Allio</i> - Advantages of going Dead Rail	<i>Allio</i> - Painting With Panpastels	<i>Achmann</i> - Using "Generators" to Create Structures WITHOUT Learning CAD	<i>Bopp</i> - Before the Motor City: The Railroad Car Builders of Detroit	<i>Bender</i> - Operations for Modular Layouts using JMRI Switch Lists	<i>Bona</i> - Modeling Coal Train Operations at J H Campbell Power Plant	<i>Bopp</i> - Riding the Michigan Central Through Nineteenth Century Detroit
<i>Blake</i> - Modeling Motion	<i>Blake</i> - Kick Up Your Switching	<i>Burgett</i> - Proper Placement of Railroad Signals	<i>Burnside</i> - SIG-SMM Presents - Kit bashing the No 3 Blast Furnace E. Thompson Works	<i>Capron</i> - Building Craftsman Kits (Part 1)	<i>Capron</i> - Building Craftsman Kits (Part 2)	<i>Capron</i> - Full and Complete Operations on a Room Size Layout
<i>Coy</i> - NMRA History Trivia	<i>DeVault</i> - B & O Prototype History	<i>DeVault</i> - Up and Over Sand Patch Grade	<i>DeMaeyer</i> - Building the Whitefish MT. Depot using new techniques	<i>DeYoung</i> - Railroads and the Natural Ice Industry: a Symbiotic Relationship	<i>DeYoung</i> - The Logging Railroads of Pennsylvania: the Industries Served	<i>Dipaolo</i> - SIG-SMM Presents - The NUCOR Steel Model Finds a Home
<i>Eaton</i> - Getting Down and Dirty With Weathering	<i>Eaton</i> - Tips & Tricks for Scratchbuilding and Kitbashing	<i>Ellis</i> - Animation on Your Layout	<i>Fugate</i> - Make It Run Like a Dream: Locomotive	<i>Fugate</i> - Painting In a Post Floquil World	<i>Fleming</i> - Revolutionizing Model RR with AI: How ChatGPT Can Transform Your Hobby	<i>Fisher</i> - Layout Planning Concept Stage
<i>Goodridge</i> - The Correct Use of Color on Your Train Layout	<i>Green</i> - Modeling C & O Prototype Scenes	<i>Geiger</i> - Iron & Steel: the Industry	<i>Gibson</i> - Prototype Modeling of the 1951 Maine Central Portland Division	<i>Golden</i> - Tappets, Dogs and Bridles - Basic Principles of Mechanical Interlocking -- Part 1	<i>Golden</i> - Tappets, Dogs and Bridles - Basic Principles of Mechanical Interlocking -- Part 2	<i>Hurly</i> - Building an Industrial Switching Layout for Maximum Enjoyment: Planning and Design Ideas
<i>Hale</i> - The Most Realistic Buildings Possible	<i>Hauk</i> - Introduction to Static Grass	<i>Hauk</i> - PRR X29 and B&O M-26 Boxcars	<i>Hansmann</i> - B&O Allegheny Yard Branch	<i>Hansmann</i> - Team Tracks & Team Yards	<i>Hobbs</i> - 90 Years of Development and Achievement in Model Railroadng	<i>Hobbs</i> - Business Cars, Private Cars
<i>Harding</i> - Livestock Facilities for Handling Livestock at Shipping Points in the Corn Belt Region	<i>Harsh</i> - Enhancing Your Railroad by Lighting Structures and Scenes	<i>Hauk</i> - Photography 101 for Railfans and Modelers (Part 2)	<i>Hauk</i> - Photography 101 for Railfans and Modelers (Part 1)	<i>Harding</i> - Operations of Meat Packing Plants and Meat Traffic (Part 2)	<i>Harding</i> - Meat Packing Plants: Prototype and Model (Part 1)	<i>Hile</i> - UTLX Tank Cars
<i>Jacobsen</i> - JMRI/DecoderPro user community meeting	<i>Juett</i> - How to Treat your Track	<i>Juett</i> - The Anachronistic Railroad	<i>Kramer</i> - Farming in N Scale Made Cheap	<i>Kempf</i> - Car Cards on the Fall River Line	<i>Koester</i> - Modeling the Wabash High Line in Proto:48	<i>Koester</i> - What's New on the Nickel Plate?
<i>Lull</i> - ABS Signaling with Layout Command Control	<i>Lewis</i> - Bound for Glory	<i>Lewis</i> - Shootin' the Rails	<i>Lowrance</i> - Scenery Ground Cover Materials Palate	<i>Lowrance</i> - What Industries for your Freight Cars?	<i>Logan</i> - Producing A Museum-Quality Backdrop for Your Layout (Part 1)	<i>Logan</i> - Producing A Museum-Quality Backdrop for Your Layout (Part 2)
<i>Logan</i> - Producing A Museum-Quality Backdrop for Your Layout (Part 3)	<i>McMullian</i> - Beginner's Guide to 3D Model Design	<i>McMullian</i> - Superdetailing Steam Locomotives	<i>Mahaney</i> - I Love Tank Cars!!	<i>Mashino</i> - Modeling Water on Your Layout	<i>Mitzel</i> - Milwaukee Road 13th Sub - Designing a Layout based on the Prototype	<i>Mack</i> - Fire Trucks and Trains - They Just Go Together! -- Part 1 (Prototype)
<i>McMullin</i> - Creating Believable Rural Scenes on a Model Railroad	<i>Mincek</i> - How to Light Your Layout Room	<i>Mack</i> - Fire Trucks and Trains - They Just Go Together! -- Part 2 (Modeling)	<i>McMullin</i> - Incorporating Potato Farming and Shipping on a Model Railroad	<i>Mincek</i> - Taking Fast Tracks Turnouts to the Next Level	<i>Moxley</i> - HO Scale Model of the Ann Arbor Railroad	<i>Neumann</i> - SIG-LD Presents -- "What Would You Do Differently"
<i>Neumann</i> - Arduino Circuits for Operations	<i>Neumann</i> - Model Railroad Communications (Phones for Ops)	<i>Ori</i> - Baltimore and Ohio Railroad Cincinnati Terminal Operations	<i>Parsons</i> - Model Train Detection Methods and Uses	<i>Parsons</i> - North American Railroad Signaling for Railfans and Modelers	<i>Porter</i> - 75 Year Anniversary Milwaukee NMRA Convention & Consummate Railfan	<i>Persing</i> - Introduction to 3D Printing



# STATION No. VI 2025 NMRA CONVENTION!

**NCR NEWS**

<i>Persing</i> - NMRA Achievement Program Update	<i>Pandelios</i> - My Bridge Obsession	<i>Persing</i> - Scratchbuilding in Wood	<i>Persoon</i> - Little Cats and Big Cats - Modeling Construction and Mining Machinery Loads	<i>Pandelios</i> - Weirton Steel's Open Hearth	<i>Priest</i> - SIG-WIMRR Presents -- Women in Model Railroading	<i>Qualman</i> - Landscaping 101
<i>Qualman</i> - Prototype Scratch Building - Houses and Other Structures	<i>Rudko</i> - Understanding Signals -- Prototype Signaling (Part 1)	<i>Rudko</i> - Signal System Types & Layout Case Study -- Prototype Signaling (Part 2)	<i>Switzer</i> - Favorite Freight Cars 11, Freight Cars of Muncie, Indiana	<i>Switzer</i> - Favorite Freight Cars 12, Freight Cars of Muncie, Indiana	<i>Schorr</i> - Modeling Stone Arch Railroad Bridges	<i>Stancil</i> - Special effects on-layout lighting
<i>Swanson</i> - NMRA Model Contest - Orientation and Discussion	<i>Saxton</i> - Signals with Very Few Wires	<i>Saxton</i> - Thin and Light Benchwork for Sectional and Multilevel Layouts	<i>Sexsmith</i> - Setting up Operations on Your Railroad	<i>Sexsmith</i> - Prairie Town Layout Design	<i>Santo</i> - Easier, Neater Decoder Installations With A Decoder Buddy	<i>Schrader</i> - Interfacing a Computer to Your Model Railroad via C/MRInet
<i>Schorr</i> - Capturing the Commonwealth - How I Recreated Pennsy's Middle Division	<i>Shepherd</i> - LCC - What Can I Buy in 2025?	<i>Smith</i> - Make & Take -- 3D Computer Aided Design for Model Railroading	<i>Tomlinson</i> - The Railway Post Office, 1860-1977	<i>Verburg</i> - Dead Rail Options for Today's Modeler	<i>Walton</i> - Signaling over LCC (Layout Command Control)	<i>Walton</i> - Signaling over LocoNet
<i>Winn</i> - Kitbashing - Thinking Outside of the Walthers Box	<i>Winn</i> - Scratching My Way to a AP Cars Certificate	<i>Young</i> - Current Thinking and Design of Modules for Bench Work	<i>Young</i> - The Ergonomics of Layout Design for Senior Modelers	<i>Zapytowski</i> - Two Prototypes, Two Models	<i>Zieska</i> - Operations on the Minnesota Heartland	

**MODELING WITH THE MASTERS** – This is a series of clinics presented by Master Model Railroaders and is a hands-on style of clinics! There is an extra cost for these clinics. Subjects presented are - Making Realistic Foreground Trees; Signs And Lettering; Making And Painting Rock Scenery; Model A Branchline Livestock Pen; Painting And Improving Figures; Building And Weathering Plaster Structures; Better Telephone Pole Realism

**OPERATING SESSIONS** – Here are the layouts that are offering OP sessions. We had 439 positions open for these 24 layouts. Some layouts are hosting multiple sessions all week long. Jeff Fryman's Wabash, 2nd Division; Doug Tagsold's Colorado & Southern Clear Creek District; Dick Tomlinson's Michigan Shore Line; Ken Chick, MMR Danforth Hadley & Northern; Michael Burgett's C&O Clifton Forge Division; Richard Neibert's Chessie System Huntington Division; Michael Kisser's Sagana Northern Railway; Ron King, MMR Erie Railroad; Tom Dart's Durango & Silverton; Jim Tilley PY&A Division of the PRR & B&O Railroads; Kevin Griffin's Iowa Central at Vinton, Iowa; Andy Keeney's Nashville Road; John DePauw's Elgin, Joliet & Eastern Railway; Norman Logan's Michigan Southern Railway; Daniel Lewis, MMR The North Montana Line; Ron Griffin's Adrian & Blissfield Railroad - Macomb Div; Scott Kremer, MMR Great Northern Cascade Division; Barry Hensel's Reading Lines, Central Division; South Oakland County Model Railroad Club's Grand Trunk Western, Holly Subdivision; Detroit Model Railroad Club's Detroit Union Railroad; Jim Botsko's PRR Monongehela Division, Southwest Branch; Ron Blumer's Central Vermont & Grand Trunk Western; Bruce Ernatt's Union Pacific / Butte Mine & Eastern RR; Gary Smith's GTW North @ Sterling Sub ALSO under OP sessions is the OPERATIONS ROAD SHOW layout. This will be located in a ballroom at the HQ hotel and is used for teaching Time Table & Train Order operations.

**PROTOTYPE TOURS** – Prototype Tours are offered and STATION No. VI is no exception. We have 5 great tours arranged - Ford River Rouge Factory Tour; The Henry Ford Museum; Greenfield Village With Steam Train Ride; Michigan Central Station, Downtown Detroit Ride & Motown Museum; Detroit River Cruise



# **STATION No. VI 2025 NMRA CONVENTION!**

**NCR NEWS**

**NATIONAL TRAIN SHOW** - The 2025 National Train Show is Saturday – Sunday, July 19-20, 2025 at the Suburban Collection Showplace! Here's what to expect: LIVE demonstrations from Woodland Scenics, Craftsman Corner and more; Exciting product announcements from multiple manufacturers; Special NMRA 90th Anniversary Celebration; Over 25+ incredible layouts to explore; Thrilling raffle prizes. Show hours: 10AM-4PM both days, Convention attendees' special hour 9am-10am on Saturday morning REMEMBER – as a registered Station No. VI participant, you get FREE admission to the show!

**NON-RAIL ACTIVITIES** – Designed for anyone that is not interested in model railroading activities, or to take a break from model railroading activities, the Non-Rail Activities are varied and open all week long. Plus there are some special presentations including - JEWELER – “FABULOUS OR FABULOUSLY FAUX” by Koko Bedrossian; ENTERTAINER – Matt Watroba coming to provide an hour of entertainment; BIRD WATCHING AND GARDENING - “BACKYARD BIRDS AND BEYOND” by Beth Jorgensen; FINANCIAL PLANNING FOR WOMEN by Bryan Belden; LANDSCAPE PAINTING by Norm Logan; ONE TIME ONLY BOOK CLUB - Like to read? A meeting to discuss The Brair Club by Kate Quinn; BINGO! Always available in our room - Playing cards, standard and pinochle; Jigsaw puzzle; Adult coloring books; Project Linus Blankets- Fleece blankets that will need to be knotted will be set out for anyone to work on; Book Exchange – bring a book, take a book.

**RAIL YARD SALE** - Do you have train models, kits, parts, and supplies that you don't need or want? Are you looking for something special, hard to find, or just a good old-fashioned bargain? The STATION No. VI RAIL YARD SALE is the place to bring you together! This activity is designed to provide individual attendees an opportunity to sell and buy railroad related items. No dealers, fund-raisers, organizations or other agents are allowed. The RAIL YARD SALE Room schedule is - MONDAY, JULY 14- 1pm -6pm Seller Setup; TUESDAY, JULY 15- 9am -12pm Seller Setup, 1pm – 6pm Open for Sales; WEDNESDAY, JULY 16- 9am - 12pm & 1pm – 6pm Open for Sales; THURSDAY, JULY 17- 9am – 12pm Open for Sales; FRIDAY, JULY 18- 9am -12pm Seller Teardown and Payout

**PEOPLE'S CHOICE MODEL CONTEST & DISPLAY** – At STATION No. VI we're hosting an RPM style model display and a People's Choice contest. All you need to do is bring a model to display (or several!). You get a raffle ticket for each model displayed. About 20-30 winners will be selected from the raffle with prizes worth about \$100 each! For those that wish to, they can also enter the People's Choice Contest at no cost. All participants of the convention will receive a voting ballot to help select these winners. There will be eight different categories. Categories and sponsors are – Steam Locomotive – Broadway Limited; Diesel Locomotive – Lombard Hobbies; Electric Locomotive – 18TEN Designs; Rolling Stock- freight – ScaleTrains; Rolling Stock- Passenger - Rapido Trains; Rolling Stock- MOW – TBD; Structure- online – Walthers; Structure- offline – TrainZ Awards will be given for 1st and 2nd in each category, plus the winners will receive gift certificates of \$100 (1st) and \$50 (2nd) from the sponsor of that category. All awards for the raffle and contest will be presented at the Pizza Party on Friday evening.

**NMRA MODEL CONTEST** - STATION No. VI will be supporting the annual NMRA Model Contest for those that wish to enter a model into this contest. We encourage all folks interested in the NMRA's achievement program to bring models to the NMRA contest. Merit awards, place awards, and manufacturer-sponsored awards will be presented to participants. Contest staff will also be available throughout the week to assist those participating in the achievement program and interested only in Merit Award evaluation and documentation completion for their models. Awards presentation will be on Thursday morning. The ONE and only restriction.... you cannot enter the display/People's Choice and the NMRA contest with the same model. You must choose one or the other for your model. You can enter different models in each contest if you wish (a loco in the NMRA contest and a different loco in the People's Choice display is OK to do!!).

We hope this overview will get you to register.... if you have not done so already!! **STATION No.VI is HERE!!**



# **STATION No. VI 2025 NMRA CONVENTION!**

**NCR NEWS**

Station No.VI 2025 has one more item to report on.... and you could benefit!! Do you need a very slightly used 85" flat screen TV? Or maybe you need a great moveable flat screen TV stand? Well..... have we got a deal for you! As you may guess, running a convention and needing lots of AV equipment can be an expensive deal. Instead of screens and projectors, STATION No. VI decided early on to go "high tech" and use large TV's. The plan was then to sell those TV's at a very discounted price and recoup much of our costs. This budgeted out to be much less expensive than renting AV equipment from an outside source, or even the hotel. That is also one of the ways we were able to keep the registration price low! Less budget... less registration money needed! SO... here is what will be **FOR SALE on Sunday, July 20, 2025.**



## **Insignia - 85" Class F50 Series LED 4K UHD Smart Fire TV**

**Model: NS-85F501NA25 SKU: 6583974 8 AVAILABLE!!**

Display Type – LED Resolution - 4K (2160p) Color – Black Series - F50 Model Year - 2024 Dimensions - Height W/Stand 46.32", Width 74.41", Depth W/Stand 15.22", Weight W/Stand 66.23 pounds Box Dimension- Height 49.21", Width 79.92", Depth 7.56" **Should be moved upright!**



## **Insignia - 75" Class F50 Series LED 4K UHD Smart Fire TV**

**Model: NS-75F501NA25 SKU: 6580447 2 AVAILABLE!!**

Display Type – LED Resolution - 4K (2160p) Color – Black Series - F50 Model Year – 2024 Dimensions - Height W/Stand 40.55", Width 65.67", Depth W/Stand 14.57", Weight W/Stand 49.6 pounds Box Dimension – Height 43.7", Width 72.4", Depth 7.5" **Should be moved upright!**



## **Greenstell Mobil TV Stand with Power Outlet for 32-85"**

**LED/LCD Flat/Curved Panel Screen TVs 10 AVAILABLE!!**

Equipped with 3 AC outlet, 2 USB ports and 6.5ft long power supply cord. And 3 cable management. Stand fits most 32" to 85" LCD,LED,OLED Flat,Curved screen tvs or computer monitor with VESA 75x75mm (3" x 3") - 600x400mm (24"x 16"). Base features 4 wheels providing smooth mobility on both hardwood and carpet floors. Stand adjustable height from 35"-70", and the sturdy media shelf can also be adjusted



## **Super Bass Jobsite Speaker several available!**

Depth 9.70", Height 21.15", Width 10.70", USB Cable, Wireless Remote, Audio/ Headphone Jack, Bluetooth Speaker, Remote control, Indoor/Outdoor, Battery Powered, Wired, Wireless

**\$25**



## **Mini Mic Pro Wireless Microphones several available!**

Dimensions: 2.5" (H) x .75" (W) x .5" (D) Weight: .2 pounds Connection Type: USB-C Polar Pattern: Omnidirectional Style: Lavalier Noise Level: 100 db spl Frequency Response: 20Hz-20kHz Battery: 2 Non-Universal Lithium Ion, Required, Included

**\$20**



We may also have some other items.... a printer (or 2) and other office type stuff.

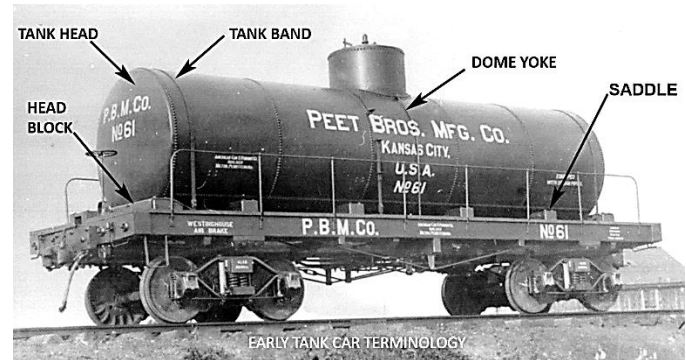
All items will be available in the Yard Sale Room - Mackinac Room, near the hotel lobby. **All sales are final.** No implied warranties or guarantees. **All items sold AS IS.** Payment is by check, made out to NORTH CENTRAL REGION. **All items MUST be taken home THAT day!** Michigan Sales Tax charged on all sales!

## THE ORIGIN OF RAILROAD TANK CAR STANDARDS IN THE UNITED STATES

Since 1967 the U.S. Department of Transportation (DOT), a cabinet level agency, has issued standards pertaining to railroad tank cars. These standards, which have the force of law, ensure that tank cars are appropriate for the safe handling of the loads for which they are intended. The most recent version of the standards, updated February 8, 2024, is 100 pages long and specifies details for the design and construction of tank cars. In this history lesson we will look at the first of these standards, just five pages long, which was issued over a century ago.

In May of 1903 the American Railway Association (ARA), the predecessor of the Association of American Railroads (AAR) asked the Master Car Builders Association (MCBA) to report on a proper design for tank cars for the safe transportation of 'volatile oils' or what we would now call VOCs or volatile organic compounds. It was estimated that as many as 2,000 tank cars, 10% of the total then in service, carried these products. The committee consisted of Alfred W. Gibbs, General Superintendent of Motive Power, Pennsylvania Railroad, Lines East—Chairman; Charles M. Bloxham, Master Car Builder of Standard Oil's Union Tank Line (UTL), by far the largest operator of tank cars in the country, and Robert Gunn, Master Car Builder, Erie Railroad.

This request was likely made partly from the realization that many of the tank cars then in service were in poor and possibly unsafe condition. But the request was given a sense of urgency after a recent accident in which several tank cars loaded with naphtha exploded, causing injuries, loss of life, and much property damage. The committee was given just five months to complete their report, until the ARA's next annual meeting in October of 1903 but they produced their report in time for the MCBA's annual meeting, held June 30 – July 1, 1903! In his remarks opening the committee's report for discussion, chairman Gibbs did not identify the tank car accident but it was most likely that which took place on May 12, 1902 at the Pennsylvania Railroad's Corliss yard in Sheraden, Pennsylvania.



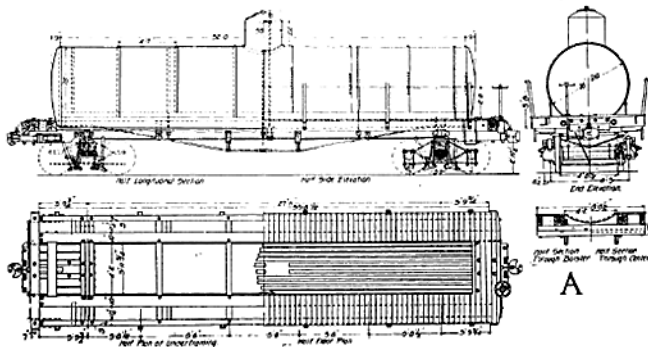
One tank car in a string of cars loaded with naphtha sprung a leak, probably from rough switching. Naphtha, a highly volatile and flammable petroleum product, spilled onto the ground and naphtha vapors were released into the atmosphere. Leaking naphtha dripped onto the open kerosene flame of a switch lamp and ignited. Intense heat from the resulting fire engulfed several tank cars, causing their contents' internal pressure to build up resulting in one car exploding.



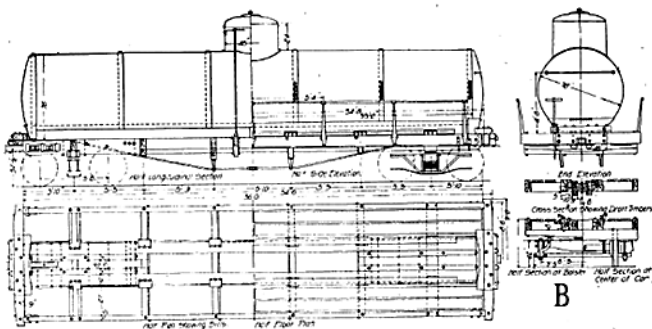


The sound of this first explosion drew huge crowds of spectators to the ridges alongside the valley where Corliss yard was located and when more cars exploded, the force of the explosions was funneled up the valley sides, injuring hundreds of the spectators.

Against this backdrop the committee got to work. Their report began with an analysis of several typical tank car designs in use at the time. They then made recommendations for improvements to existing tank cars as well as recommendations for new tank car construction. The committee looked at three types of wood-framed tank cars and five types of steel-framed tank cars. We will review a sampling of these tank car types.

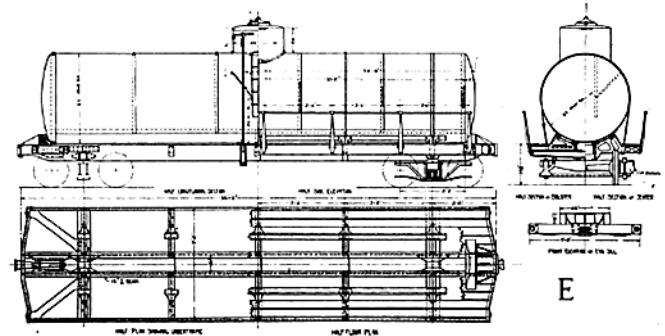


The first design shown in the committee report, labeled A, was said to be the most numerous type then in service, and also the worst design. The committee's main problem with the type A car was the wide spacing of its center sills which weakened the frame and made it impossible to give a satisfactory attachment to the draft gear.

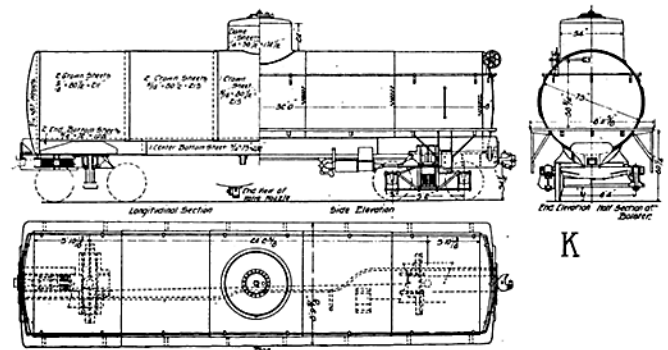


The committee didn't much like wood frames for tank cars but the next design, type B, they considered to be the best of this bad lot. In this design the center sills were closely spaced, strengthening the underframe, and allowing for the

draft gear to be attached directly to the center sills. The steel underframe tank cars the committee reviewed were all were said to be patented designs but only one was identified. We will look at two of these designs.



Type E had a Bettendorf steel underframe, patented in 1898, well before William P. Bettendorf designed his revolutionary cast steel freight car truck. Bettendorf sold complete tank cars as well as bare underframes to those customers who preferred to supply their own tanks. Between 1901 and 1903 UTL bought 2,220 Bettendorf steel underframes. They likely fitted them with a mix of new tanks and tanks taken from older wood frame cars. The Bettendorf underframe certainly provided all the strength the committee could ask for but it didn't advance tank car design, rather, it repeated the features of a wood frame in steel.



The same cannot be said for the type K car. This was the well-known UTL V-Type frameless design, better known as the Van Dyke tank car after its inventor, John W. Van Dyke of UTL. This car was an advanced, radical, and controversial design. The old guard in railroad management could not accept that a tank car could have a self-supporting tank which did away with the need for an underframe, despite the efforts put forth by UTL to convince them otherwise.

The committee's report mentioned the Van Dyke car by name and stated that they were "quite sure that this construction is as strong as that of the metal underframe cars herewith shown." and added, "It may be fair to state that this is the joint opinion of the railroad members of the committee who have examined this car." No doubt the railroad members of the committee were heavily lobbied on this point by the committee's UTL member.

After analyzing the existing tank cars, the committee issued recommendations for the improvement of these cars, now known as Type I cars. Here are some highlights from their recommendations:

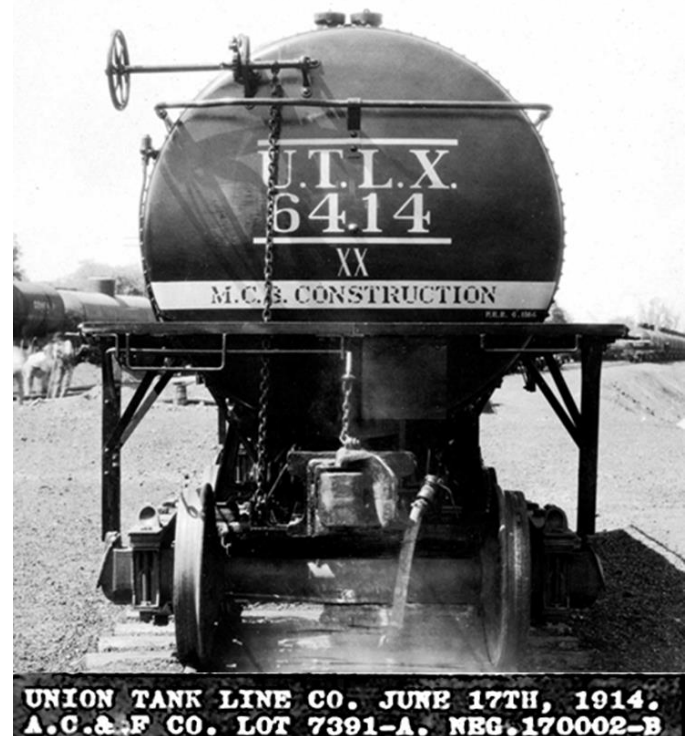
- All cars of general type A should be strengthened by the introduction of continuous center sills not less than 5 X 10 inches in size and spaced not more than 18 inches apart.
- The present wooden bolsters should be replaced with metal bolsters, both body and truck.
- The tank should be secured to the frame by not less than 3, and preferably 5, straps; 1 encircling the dome and 1 at each end.
- Trucks to be strengthened to conform with MCB requirements for cars of a given capacity.
- All tank cars must be equipped with automatic air brakes, and with one hand brake, these to be operative on both trucks.
- Tanks must withstand a cold-water pressure test of 40 PSI.
- All tanks must be equipped with one or two safety valves as described in the recommendations.

A different set of recommendations was made for new tank car construction, known as Type II cars:

- The underframes should be of metal.
- All new tanks shall be of steel; all longitudinal and head seams shall be double riveted.
- The tanks shall be designed for a bursting pressure of not less than 240 PSI, and all tanks before being put into service must withstand a cold-water pressure test of 60 PSI.
- All new tank cars must be equipped with friction draft gear, with steel couplers, steel bolsters; air brakes and hand brakes operative on both trucks and with safety valves as specified for old cars.
- On all tank cars carrying liquids of a volatile and inflammable nature, safety valves as shown on drawing M herewith should be applied.

The Tank Car Committee's report was presented by Charles Bloxham, opened for discussion, and voted on, on July 1, 1903. The Association voted that the Tank Car Committee's report be presented to the ARA at its October meeting with the endorsement of the Association. Over the next 120 years the tank car standards were frequently updated while the procedure for making those updates and the organizations issuing the standards evolved. The details of this evolution are beyond the scope of today's history lesson but a quick timeline of the standards' history is useful:

- 1903, July 1. The MCBA voted that the Tank Car Committee's report be presented to the ARA at its October meeting with the endorsement of the Association.
- 1906, 1907, 1908, 1909. The recommendations were revised.
- 1910. The MCB tank car recommended practices were made an ARA standard. Cars conforming to the MCB standard (Class II cars) were to be lettered "MCB CONSTRUCTION"





- 1912, 1913, 1914. The standards were revised.
  - 1916. Standards for existing cars were revised. New standards for general purpose cars (Class III) and cars for volatile liquids (Class IV) were added. (different sources give different dates)
  - 1927, July 1. The Interstate Commerce Commission (ICC) adopted the further revised standards as regulations.
  - 1967. Authority to regulate the transportation of hazardous materials was transferred from the ICC to the Department of Transportation (DOT), a new federal agency
- And that brings us back to where we started.

## SOURCES

Hile, Stephen. *UTLX Steam Era Tank Cars*, Guilford, CT: Speedwitch Media; 2018, ISBN: 978-0-9749508-4-6

*The Pittsburgh Press*, Pittsburgh, PA: May 13, 1902

*The Railway Age*, Chicago, IL.: Vol. XXXVI, No.2, July 10, 1903, pp. 38-43

*Report of the Proceedings of the Master Car Builders' Association Held at Saratoga, NY., June 30, 31 and July 1, 1903, Chicago, IL.: Printed by The Henry O. Shepard Company, 1903, pp 312-331*

**NOTE-** John Bopp is a Division 6 member and has been our "historian" for several years, giving our members interesting railroad related history lessons nearly every meeting. The HotBox will be featuring many of his lessons. Thanks John!

**YOU should join and attend your local NMRA/NCR/Division meetings and activities! Get the most out of your hobby – participate often!!**

**How about writing an article on your latest modeling project! Earn AP points! At the HotBox, WE NEED and WANT your articles!!**

## NCR DIVISION HAPPENINGS

## DIVISION INFORMATION

### **Division One - Black Swamp Division** (Northwest Ohio with Michigan Lenawee and Monroe Counties)

Our regular meetings have moved! We now meet on the SECOND FRIDAY of each month! We just concluded our 2025 Spring season and are now on summer break until September 12, 2025. We are planning a summer outing which will be in the first half of August. Stay informed of the latest news and information at the Black Swamp by visiting our website and subscribing to our newsletter at <http://div1.ncrnmra.org>. Our Facebook group is <https://www.facebook.com/groups/ncrdiv1> (submitted by- Marshall Stull, Superintendent)



**July 14-19, 2025**

The **NCR and SE Michigan** will be your host for the 2025 NMRA National Convention! This will be like no other convention you have ever attended!

### **Convention Highlights –**

- ✓ One low price for everyone! includes layout tours & OPS!
  - ✓ 90+ clinics - 65+ layout tours - 30+ OPS sessions
  - ✓ 2 day National Train Show - 5 day Yard Sale Room
  - ✓ RPM modeling displays - Full NMRA modeling Contest
  - ✓ People Choice Voting w/awards - Saturday night banquet
- ....and MUCH MORE!!

<https://nmra2025.com/>



We're reaching into the HotBox archives again and came up with a trains on bridges theme. We're very sorry to say that we do not know who the photographers are. We have very little info, but can offer this – *left down, then right.....* Ann Arbor RR over the Huron River in 1980 • NYC steamer crossing over the John Lodge fwy in Detroit in 1950 • Copper Range RR most likely in the UP • NKP 765 going over the AA RR bridge over the Huron River in Ann Arbor • CP Steel River in 1973 • The Little River no. 110 running on the old NYC (nee' Ft Wayne & Jackson Railroad) between Pleasant Lake, Indiana and Hillsdale, Michigan





We are sad to report that members in the NCR have been lost. Our deepest sympathies go to the family and friends of our fallen members.....

**ROBERT G. "BOB" BRASSEUR** 1936 – 2025 Passed away peacefully on Thursday, February 27, 2025 at My Michigan Medical Center of Saginaw. He was 88 years old. Robert was born on April 27, 1936 in Saginaw to Gilbert J. and Nina C. (Goodrow) Brasseur. He graduated from Holy Family High School in 1954. Bob then worked for a few years in Saginaw and then proudly served with the United States Marine Corps from 1956 until 1958. He returned to Saginaw and worked for Eaton Manufacturing Company, and then Saginaw Steering Gear, retiring after 30 years as an electrician. Bob was an active member of St. Thomas Aquinas Church and was involved in many of the church ministries including a Lector, Eucharistic Minister, and the Charismatic Renewal. During his busy life of raising a family and working full time, his dream and proudest accomplishment was owning and operating a model train store in Saginaw for over 50 years. He had the opportunity to run Brasseur Electric Trains with the love of his life, Nancy Ann (Smith) Brasseur. They celebrated 63 years of marriage before her passing on May 28, 2024. Bob fully embraced life and all of the joys celebrated here on earth, but his first love was Jesus, his second love was Nancy and his third love was Lionel Trains.



*From the O Gauge Model Railroad Forum page -*

Hello everyone. With a heavy heart I would like to inform you that my Dad, Robert "Bob" Brasseur, passed away on February 27, 2025. Another "Old Guard" icon of our industry is gone and will be sorely missed. Bob had a lifelong passion for Lionel trains. He acquired Lionel Service Station #199 in 1970. This was the start of Brasseur Electric Trains in Saginaw Michigan. I (Dean) got my passion for repairing trains from him at an early age and years later I helped him open the train store. Bob was also instrumental in Jacob's (his grandson and Dean's son) passion for train repair as well. Jacob and I are carrying on the tradition of providing excellent customer service through Brasseur Electric Train Repair in Albemarle, NC.

## **BUILD A RAILROAD TUG** by Barry Hensel, Div 6 **NCR MODELING**

### **THE READING TUG – SCHUYLKILL part 1**

My Reading Lines – Central Division layout has needed a tug boat for the Port Richmond coal dock scene for some time. I finally found a Walthers Tug kit for a reasonable price at a local train show. And that has started this journey and clinic.... I am not trying to model a Reading Tug precisely, but make this model enough of a Reading Tug to be recognized as a Reading Tug.

Here is the kit which is the starting point. The Reading Railroad had a tug fleet of 6 tugs in two different classes. This kit closely matches the first class, of which the Schuylkill is also a class 1 Reading Tug.



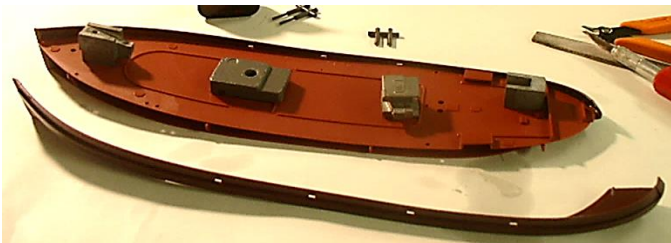
Let's get started..... (next page)

## ***BUILD A RAILROAD TUG*** by Barry Hensel, Div 6 ***NCR MODELING***

Here's some of the basic kit components... these are the hull parts, which is built first. The right side of the hull gets glued to the bottom after some supports are glued in. The bottom edge between the hull and bottom does not have tabs so be careful when aligning these parts. I used some ACC to hold them together more quickly.



One would think you glue the left hull to this assembly – NO!! the deck must now be glued to the right side and bottom. This is because the hull sides are wrapped over the decking and you would never get the deck installed if the hull was glued together. BE VERY careful lining up the deck with the hull side!! (don't ask me how I know...) The deck is curved so some weights were added to help hold it down while the glue dried. My mistake was not being careful when aligning the deck and it was too far forward – See how I did not get the front lined-up properly!



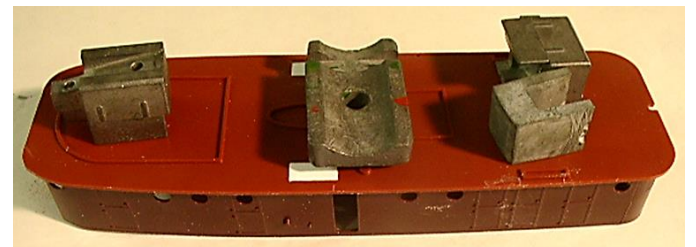
One possible solution would have been to trim the

deck to a new point to match the right side hull piece. But I figured when you add the fender (the large mass at the front of a tug that it uses to push with) it would help hide my mistake. I proceeded to fill the gap with some strip styrene and putty. Again, it doesn't look too bad and most will be covered anyway. I just didn't take the extra minute to be sure it was lined-up correctly. It looks OK at the rear, but you have to double check the front... as I found out!

Next, also realized through photos, the Reading Tugs did not have the inside stairways to the upper deck as on the model. Thus the holes in the deck were filled and the stairs not installed, but I did install the walls. To help in a bit less trimming, I installed the two side walls on the opposite sides, so the stairway support would be on the inside. Thus the wall showing through the open doors will be flat.



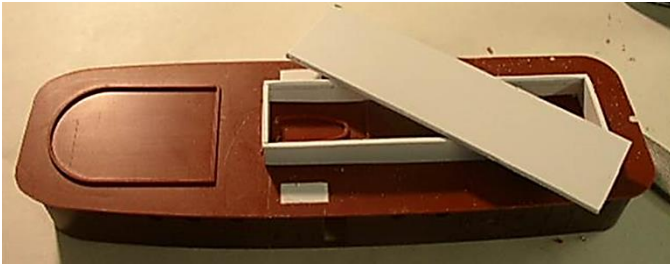
Back to the cabin sides, glued them in place and again, used weights to hold them together because the walls are curved to match the main deck. I had to modify the front wall – remember, the kit is quite curved and I flattened the deck front contour to be more straight. I took the wall and blasted it with a hair dryer on HOT and pushed down on the wall piece to try to flatten it. This worked fairly well and the wall was flatter but still had a bit of curve.





# ***BUILD A RAILROAD TUG*** by Barry Hensel, Div 6 ***NCR MODELING***

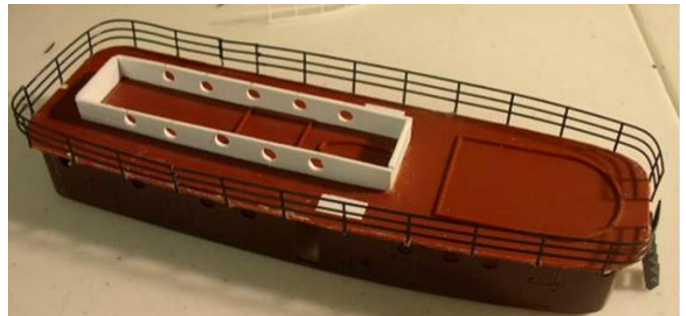
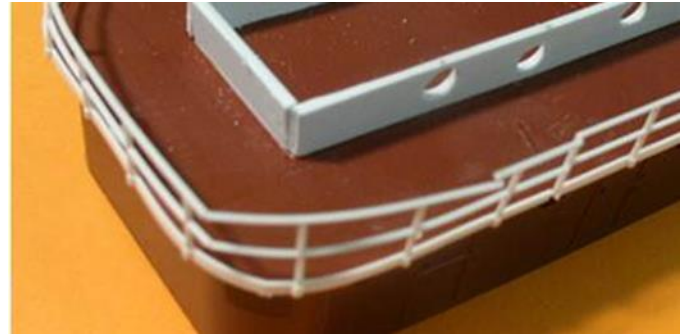
Using plain styrene I fashioned the upper deck extension. I drilled holes for the port-holes, but did not do the best job I could... It will due.



Adding a piece of stairway to the front and placing the pieces together to get a preview of the tug! I had also built the stack and used a roof vent from my scrap box to make the stack top vent. I filed it to shape as best as possible looking at photos for guidance. Because of the paint scheme, I have not glued many of these pieces together yet.



Here's my attempt to do the hand rails, per kit instructions. They are supposed to simply bend in place – right!! I also tried a hair dryer and melted a few spots. Not happy, I stripped these off of the model and sought out some Central Valley railings. Using a pot of hot water, it was easy to bend the railings to near perfect size! In the upper right photo is one railing that has been bent, the other waiting to be bent. Then I bent one railing piece for the entire back. This left a gap on each side which was filled with extra railing pieces. Here's the railings completed. And I added the stairway railings.



The BIG questions is... Do I modify the railings to be like the prototype? The Central Valley railings are in thirds, as opposed to the real railings that are in half's. So do I cut out the middle railings? The overall height of the railings is correct, as seen in the pictures. I left the railing as is.



*We'll finish the build in the next HotBox!*



**HobbyTown**  
Play Smart

21770 W 11 Mile Rd • Harvard Row Mall • Southfield, MI 48076-3718  
P 248.864.5277 F @hobbytown.southfield E mtHobbyTown@Ameritech.net

## Whistle Stop Hobby & Toy, Inc.

Over 40,000 fun items for the  
ENTIRE family!!

21714 Harper Ave.  
St. Clair Shores, MI 48080

p: 586.771.6770  
f: 586.771.3207

[www.whistle-stop.com](http://www.whistle-stop.com)



35101 Ford Rd  
Westland, MI 48185  
734-722-5700

33350 W Nine Mile Rd  
Farmington, MI 48336  
248-919-0040

1480 Washtenaw Ave  
Ypsilanti, MI 48197  
734-961-7575

12020 Fort St  
Southgate, MI 48195  
734-250-7382



43055 Van Dyke Ave  
Sterling Heights, MI 48314  
586-254-1600



Mon-Fri 10am-8pm  
Sat 10am-6pm (Flt)  
Sat 10am-7pm (GR)  
Sun 12pm-5pm

2061 S. Linden Rd Flint, MI 48532  
810-720-2500

2055 28<sup>th</sup> Street SE Grand Rapids, MI  
49508 616-247-9933

**OTHER HOBBY SHOPS in the NCR** - Whistle Stop Hobbies & Crafts, Decatur, IN - Phil's Hobby Shop, Fort Wayne, IN - The Gladieux Train Depot, Oregon, OH - Carlton Hobbies, Waterford, MI - Trains and Things Hobbies, Traverse City, MI  
**Please visit your local hobby shop!**

**HOBBY SHOP NEWS** – If you have a favorite hobby shop in the NCR boundaries that you would like to see listed on this page, please let us know!!

If you have a story about a local hobby shop giving you over the top service, let us know!!

**THANK-YOU to our hobby shops for your support by selling the HotBox in your stores!**



# **NCR SCHEDULE**

## **NCR DIVISION meetings**

## **NCR INFORMATION**

### **Division One Black Swamp Division** (Northwest Ohio and Michigan Lenawee and Monroe Counties)

We meet at the Proclaim FM radio station community center at 7112 Angola Rd., Holland, OH 43528. Meetings are held on Friday evenings once a month from September - May. During the AUTUMN (June - August) we will have a field trip to a rail museum, prototype site, layout tour, etc. The exact schedule, information about our activities and our monthly publication, the Train Order, are posted on our website at <http://div1.ncrnmra.org>

**Division Two - Tip of the Mitt** (Northern Michigan) Twenty-four counties, both north and south of the Mackinac Bridge. Meetings are typically held in Traverse City on the 3rd Saturday of each month. Planning is ongoing for 2025. We also go hybrid, connecting by Zoom. To request meeting invites and our quarterly newsletter, email our Superintendent, [jens.hensel50@gmail.com](mailto:jens.hensel50@gmail.com)

### **Division Three 3 Rivers Division** (Fort Wayne, Indiana and western Ohio)

Our meeting schedule is the 3rd Monday of the month with Zoom meetings in January, April, & October, In person meetings in February, May, August, & November with various meeting locations, & Operating Sessions in March, June, September & December at various members homes. Any updates/changes can be found on our website: <http://div3.ncr-nmra.org>

### **Division Four Grand Rails Division** (Grand Rapids and western Michigan)

We meet monthly using locations in Holland and Grand Rapids. All meetings start at 10am and details to be determined. For additional information contact Superintendent Mark Baldwin [grandrailsdiv@gmail.com](mailto:grandrailsdiv@gmail.com) or 616-258-0110 or visit the NEW division website at - <http://grandrailsdiv4.org>

### **Division Five Capital Division** (Lansing and mid-lower Michigan)

Meets at 1pm, on the SECOND Saturday of each month at the Meridian Township Fire Department event room in Okemos. We meet September to May with additional activities added through the year. Please check our website or contact the Supervisor for meeting location. <https://nmrancrdiv5.com/>

### **Division Six Motor City Division** (Wayne & Washtenaw Counties)

Meets at 7pm, on the THIRD Friday of each month at the Livonia Senior Center, 15218 Farmington Road, one mile north of the I-96 Jefferies Freeway, Livonia. Division 6 meets year-round. [www.div6-ncr-nmra.com](http://www.div6-ncr-nmra.com)

### **Division Eight Clinton River Division** (Oakland, Macomb and St. Clair Counties)

Meets at 7:00pm, on the THIRD Thursday of each month at Troy Christian Chapel, 400 East Long Lake Road, between Rochester and Livernois Roads, Troy. Division 8 meets year-round. <http://div8.ncrnmra.org/>

### **Division Nine SW Michigan Division** (Branch, Calhoun, Hillsdale, Kalamazoo, St. Joseph and Van Buren Counties)

We meet monthly on the 3rd Saturday of the month, except in July and August. Monthly meetings start at 9:30AM at one of two locations (check website for meeting location each month). Our meetings typically include a clinic and/or layout tour(s). Visitors are always welcome. For additional information contact Garry Johnson, Superintendent at 269-365-6777. Our NEW website is <https://div9.ncrnmra.org>

**Division Ten Ten Wheelers Division** (Shiawassee, Genesee, Lapeer, Tuscola, Sanilac, Saginaw, Bay, Midland, Arenac, and Gladwin and Huron Counties) Meets the FOURTH Thursday of each month at 7 PM at Dalton Airport on Pierson Road in Flushing. We meet in the meeting room of Experimental Aircraft Association Chapter 77. Contact Superintendent, Wayne Wilder 989-823-3409 or [ncrdiv10@gmail.com](mailto:ncrdiv10@gmail.com) for directions to the meeting location.

OTHER GROUPS meeting in the NCR AREA There are MANY rail organizations in the NCR area. They can be found at [www.michiganrailroads.com](http://www.michiganrailroads.com) [www.ohiorailtourism.org](http://www.ohiorailtourism.org) [www.irtg.org](http://www.irtg.org)

**YOU should join and attend your local NMRA/NCR/Division meetings and activities! Get the most out of your hobby – participate often!!**

**NEW!!**

# TWO events in one!!

**NEW!!**

*Rails on Wheels*

## **SOUTHEAST MICHIGAN MODEL RAILROAD SHOW & SALES MARKET**



and

## **46th MODEL RAILROAD SHOW & WORKSHOP**



**10am – 3pm Sunday  
November 23, 2025**

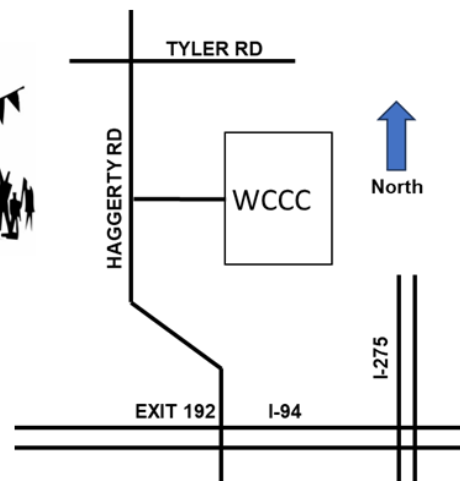
***New Date!  
New Location!***

**RR Show & Sales** – see 130 tables of vendors selling all scales of new & used model train items – see several model RR layouts

**RR Show & Workshop** – see tables of demonstrations of “HOW TO DO” model railroading – basic kit building, historical displays, painting, weathering, track laying, Div 6 HO model RR layout

***GREAT FUN FOR THE ENTIRE FAMILY! STOP BY TO  
SEE OR BUY! ASK QUESTIONS – GET ANSWERS!***

Wayne County Community College  
Ted Scott Campus  
555 Haggerty Road  
Belleville, Michigan 48111



Admission - \$5 per person  
under 12 is FREE

Early Bird entry 9am - \$10 per person

Vendor info - [cdjhyoung@yahoo.com](mailto:cdjhyoung@yahoo.com)



# **NCR TIMETABLE EVENTS!**

## **NCR AREA EVENTS**

**NOTE-** Events listed have been compiled from listings on [www.trainshowlist.com/](http://www.trainshowlist.com/) and [www.trains.com](http://www.trains.com), website for Model Railroader magazine. If you have an event you want listed, it's FREE, but information must be submitted to the Editor at least 45 days in advance of our publication dates!

**Sunday, July 6, 2025** - Model Train Day Moore Museum 94 Moore Line Mooretown, ONT, Canada  
1pm to 4pm Adults \$6, Child \$3 We will be running our 6 permanent indoor layouts. We have a collection of over 30 exquisite scratch-built structures on display by Master Model Railroader Don Eastman of Sarnia, Ontario. We also have a full size Canadian National caboose (built 1914), plus the original (1893) Mooretown Pere Marquette train station. There are no sales at this show. Contact Information- Fiona Doherty [mooremuseum@stclairtownship.ca](mailto:mooremuseum@stclairtownship.ca) 519-867-2020 Website: <https://mooremuseum.ca/>

**Saturday - Sunday, June 21 - 22, 2025** – 18th Carillon Park Rail and Steam Festival  
Carillon Historical Park 1000 Carillon Blvd. Dayton, OH Saturday 9:30am – 5pm and Sunday 11am – 4pm  
\$14 adults, \$12 seniors, \$10 children Featuring model train displays, historical displays, live steam engines, food & merchandise vendors, flea market, and miniature train rides through-out the weekend. Website, [www.railfestival.com](http://www.railfestival.com) Contact Information- David Oroszi [David.oroszi@usa.net](mailto:David.oroszi@usa.net) 937-238-5655

**Monday - Saturday, July 14 - 19, 2025** - Station No. VI - 2025 NMRA National Convention  
Sheraton Novi 21111 Haggerty Road Novi, MI 2025 NMRA National convention - layout tours, OP sessions, Clinics, national train show, modeling displays and contests, banquet with guest speaker hosted by the North Central Region Website: <https://nmra2025.com/>

**Saturday-Sunday, July 19-20, 2025** – NMRA National Train Show  
Suburban Collection Showplace 46100 Grand River Ave. Novi, MI 48374  
10am-4pm both days <https://nationaltrainshow.org/2025/ntsnovi.html>  
The National Train Show® was established in 1988 by the National Model Railroad Association as a nationally sponsored combined industry trade show and public train show to promote the hobby of model railroading. The 2025 National Train Show is held in conjunction with the National Convention of the NMRA in Novi, MI.  
Advanced Online tickets: Online Ticket Sales will begin June 2025  
Adult Tickets - 2 Day Pass \$20 Saturday \$18.95 Sunday \$13.95 Under 16 with Adult purchase - Free  
Onsite Ticket Pricing at the Door - Only cash is accepted at the door, no credit cards or checks.  
Adult Tickets - 2 Day Pass \$25 Saturday \$20 Sunday \$15 Under 16 with Adult purchase - Free

**Saturday & Sunday, August 2 & 3, 2025** - Railfans Weekend at Huckleberry Railroad, Crossroads Village in Flint, MI. More details at - <https://geneseecountyparks.org/railfans-weekend/>

**Saturday - Sunday, August 16 - 17, 2025** - 22nd Annual - Van Wert Railroad Heritage Weekend Model Railroad Show & Swap Van Wert County Fairgrounds 1055 S Washington St., Van Wert, OH  
Saturday 10am-4pm and Sunday 10am-3pm Admission \$7 with Family Admission on Sunday. Children under 12 and Scouts in uniform FREE. \$10 Early Bird admission both days after 9 AM  
NOTE the change to our dates!!! Over 250 Vendor Tables and 6 large modular operating model railroads plus several other layouts, Thomas, Timesavers, and Displays. Favorite Layout Ballot with Food Court Coupon included. Almost 40,000 sq. ft, under roof, Free stuff for the kids. Handicap accessible. Free Parking. The Fairgrounds' Main Entrance will be closed as a safety precaution. Sponsored by and for the benefit of the Van Wert County Historical Society. Website: <https://www.vwrrhw.com/>  
Contact Information - Charles White [railcarman@frontier.com](mailto:railcarman@frontier.com) 260-760-1666

**Saturday, September 20, 2025** - Battle Creek Model Railroad Club Train Show & Swap Meet  
Calhoun County Fairgrounds 720 Fair St. Marshall, MI 10AM - 3PM \$5 Children 12 & Under: Free  
Several operation layouts, including a "Hands on" Displays, vendor, door prizes, food, unlimited FREE parking, and FUN! Children 12 & under can register to win a Train set. Visit our website: <http://www.bcmrrc.net>  
Contact Information - Shawn Rhoades [shawn.rhoades@outlook.com](mailto:shawn.rhoades@outlook.com) 269-758-3477

## NCR TIMETABLE EVENTS!

## NCR AREA EVENTS

**Saturday, September 27, 2025** - 23rd Fostoria Rail Festival Fostoria Jr. Sr, high school & Fostoria elementary 1001 park avenue Fostoria, OH 200+ vendor tables, model train layouts, train mdse. Photo contest, soup contest Contact information - Ellen Gatrell [ellengatrell@gmail.com](mailto:ellengatrell@gmail.com) 419-435-1781  
Website: <http://fostoriairontriangle.com/events.htm>

## NCR HotBox PIKE ADS

YOU too, can have a Pike Ad for your railroad or club! Just email the HotBox Staff for all the details. We'll even help you design your Pike Ad. **And best of all... IT'S COOL!!**

### MEMBERSHIPS OPEN

MEETS EVERY MONDAY AT 7:30PM



**Gratiot Valley Railroad Club**

281 NORTH AVE.

MT. CLEMENS, MI 48043

FOR INFORMATION CALL- 586-468-4877

[www.gvrr.org](http://www.gvrr.org)

### Redford Model Railroad Club Sand Hill & Western Railroad

EST. 1938 Oldest HO Club in Michigan  
Inkster, Michigan

- ♦ Free open house events
- ♦ Boy Scout Railroad Merit Badge

- ♦ Thursday's 7:00 pm
- ♦ Visitors Welcome!
- ♦ Memberships Open!



For Information Contact

[Secretary@redfordmrrc.org](mailto:Secretary@redfordmrrc.org)

<http://Redfordmrrc.org>

<https://www.facebook.com/redfordmodelrailroadclub>



**DKS RAILWORKS**

SELL AND BUY MODEL TRAINS

BRASS - DIECAST - PLASTIC

RTR - KITS - BUILDINGS

ESTATES - DATED INVENTORIES - LIQUIDATIONS

LAYOUTS DISMANTLED

Contact Doug Kass: (586) 306-5306 or email: [info@dksrailworks.com](mailto:info@dksrailworks.com)

[www.dksrailworks.com](http://www.dksrailworks.com)



MINNESOTA-DAKOTA DIVISION  
13TH SUBDIVISION  
D. M. MITZEL, General Manager  
Oxford, Michigan

**LaRoutes des VinRR**  
Reflections on a Classic Europe

Tony Britsky, Troy, MI [www.LaRoutesdesVinRR.com](http://www.LaRoutesdesVinRR.com)

**saturnprinting**  
design print copy mail fulfillment signage  
Owned and Operated by EMCC Member  
Duane MacDonald

Your HotBox Printer  
for over 15 years!  
**THANK-YOU!!**

DESIGN  
PRINT  
COPY  
MAIL  
FULFILLMENT  
SIGNAGE

**734.427.2887**  
35175 Plymouth Rd | Livonia, MI 48150  
One block west of Wayne Road  
[www.saturnprinting.com](http://www.saturnprinting.com)



# NCR HotBox PIKE ADS

**Quality model railroading in  
S Scale 1:64**




**SOUTHEASTERN  
MICHIGAN  
S  
GAUGERS**

Memberships open!  
Visitors Welcome!  
For more information  
we're on the web at  
[www.smsgrains.org](http://www.smsgrains.org) - or  
Contact- [t.hawley@comcast.net](mailto:t.hawley@comcast.net)

**Michigan  
Southern**

*Serving  
Southeast  
Michigan*

**Norm Logan  
Northville, MI**



Larry Wolohon  
President & Chief  
Bottle Washer  
2 Rail O scale  
Late 1940's  
Branchline TBD  
Plymouth, MI



**C&M**

**Calumet & Miscoaubik  
Railroad**

Michigan's Copper Country  
1913 in HO scale


Mike Sutinen Ann Arbor, MI



**MICHIGAN  
LINES**

*Jay and Brook Qualman | Milford, Michigan*

**THE ROAD WEST**



**DANFORTH HADLEY &  
NORTHERN**


A Division of NP RAILWAY KEN CHICK  
NORTHVILLE, MI

Barry Hensel Era- 1970  
Canton, MI HO Scale



**Reading  
Lines**


**CENTRAL DIVISION**

**Grand  
Trunk  
Western**


**Detroit Division  
Curt Danielewicz  
Macomb, Michigan**

**COPPER VALLEY  
RAILWAY**



**CVR**

**JIM ZINSER  
Dearborn Heights, Mich.**



**Grand  
Trunk  
Western  
Historical  
Society**

GTWHS  
PO BOX 183682  
SHELBY TWP, MI 48317

Come visit us on the 2nd floor of the historic  
Durand Union Station on Saturdays  
between 1 and 4 PM

109 E. Adrian (US 223)  
Blissfield, MI 49228  
517-486-0404

**Blissfield  
Model Railroad Club**



**BMRC**

**Monthly Open House Weekends**

Handicapped  
Accessible

Ground floor  
Parking in front

Visit us at:  
[www.bmrr.org](http://www.bmrr.org)  
[www.facebook.com/blissfieldmrc](http://www.facebook.com/blissfieldmrc)



**"THE COLORADO ROAD"**  
**Colorado & Southern R.R. Co.**

**COLORADO & SOUTHERN  
RAILROAD**

**CLEAR CREEK BRANCH  
Dan Kempf  
Ann Arbor, Michigan**



**Chessie System**

**Huntington Division  
Richard Neibert  
Superintendent**

**Lake Shore Garden Railway Club**



**G Track: Standard  
and Narrow Gauge  
Scales - Garden  
Layouts & Modular  
Show Layout**

**New Members Welcome**  
[www.lakeshoregrc.org](http://www.lakeshoregrc.org)

**South Oakland County  
Model Railroad Club**

Hazel Park, MI  
Visitor Sessions on 3rd Saturday  
of month

**New Members Welcome**  
For information contact  
[info@socmrrc.org](mailto:info@socmrrc.org)  
[www.socmrrc.org](http://www.socmrrc.org)



**National Model Railroad Association**  
The North Central Region,  
c/o Jonathan Pulling, Resident Agent  
1826 Linden Street  
East Lansing, MI 48823

---

*in the next issue of THE **HotBox** –*

**MORE LAYOUT PHOTOS**

**MORE HOW-TO-DO ARTICLES**

**MORE INFORMATION**

*.... stay tuned! Stay informed!*



**RR TUG BUILD**  
*Part 2*

**STATION No. VI**  
**CONVENTION WRAP-UP!**



***RailFanning Dick Tomlinson's  
Michigan Shore Line Railroad***

